

# BODY INTERIOR

7115-00/7115-01/7120-00/7120-02/7121-00/7215-00/7215-01/7220-00/  
7220-02/7221-00/7321-01/7330-00/7330-03/7330-17/7610-00/7610-01/  
7610-20/7610-32/7630-00/7630-01/7631-00/7631-10/7700-01/7710-00/  
7711-00/7730-00/7730-01/7730-04/7730-06/7730-30/7770-00/7792-00/

## INDEX

## BODY INTERIOR

### CONFIGURATION AND FUNCTION

7115-00 FRONT DOOR TRIM.....	3
7120-00 FRONT WINDOW LIFTER.....	4
7121-00 FRONT WEATHER STRIP.....	5
7215-00 REAR DOOR TRIM.....	6
7220-00 REAR WINDOW LIFTER.....	7
7221-00 REAR WEATHER STRIP.....	8
7321-00 REAR END TRIM.....	9
7330-00 HEADLINING.....	10
7610-00 INSTRUMENT PANEL.....	11
7630-00 FRONT CONSOLE.....	12
7631-00 REAR CONSOLE.....	13
7710-00 FLOOR CARPET.....	14
7730-00 PILLAR TRIM.....	15
7770-00 SUN SHADE & INSIDE MIRROR...	16
7792-00 DEADENER.....	17

### REMOVAL AND INSTALLATION

7115-01 FRONT DOOR TRIM PANEL ASSEMBLY.....	18
7120-02 FRONT POWER WINDOW MOTOR.....	21
7215-01 REAR DOOR TRIM PANEL ASSEMBLY.....	25
7220-02 REAR POWER WINDOW MOTOR.....	28
7321-01 TAILGATE LOWER TRIM PANEL.....	32
7330-03 HEADLINING.....	36
7330-17 GRIP ASSEMBLY.....	44
7610-01 INSTRUMENT PANEL ASSEMBLY.....	46
7610-20 LOWER MAIN PANEL ASSEMBLY.....	71
7610-32 CLUSTER FASCIA PANEL.....	79
7630-01 CIGARETTE & POWER JACK FASCIA ASSEMBLY.....	84
7631-10 REAR CONSOLE ASSEMBLY.....	86
7730-01 A-PILLAR TRIM.....	88
7730-04 B-PILLAR UPPER TRIM.....	90
7730-06 QUARTER UPPER TRIM.....	93
7730-30 DOOR SCUFF FRONT TRIM.....	99
7700-01 SUN VISOR.....	101

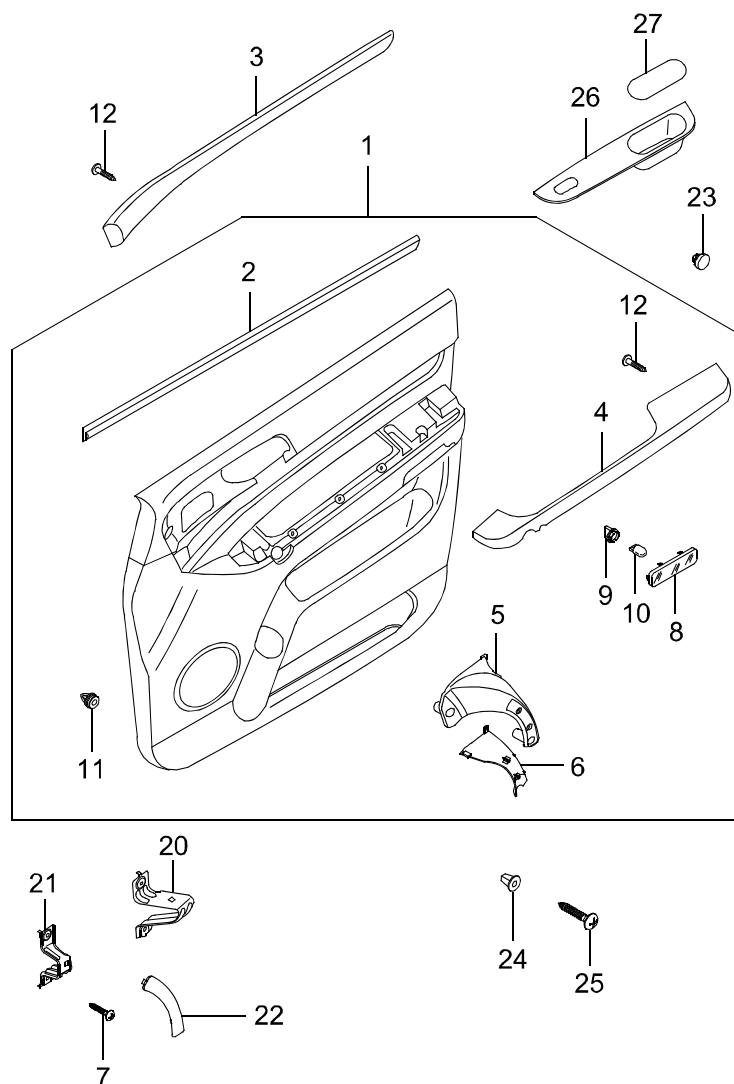


# BODY INTERIOR

0000-00

## CONFIGURATION AND FUNCTION

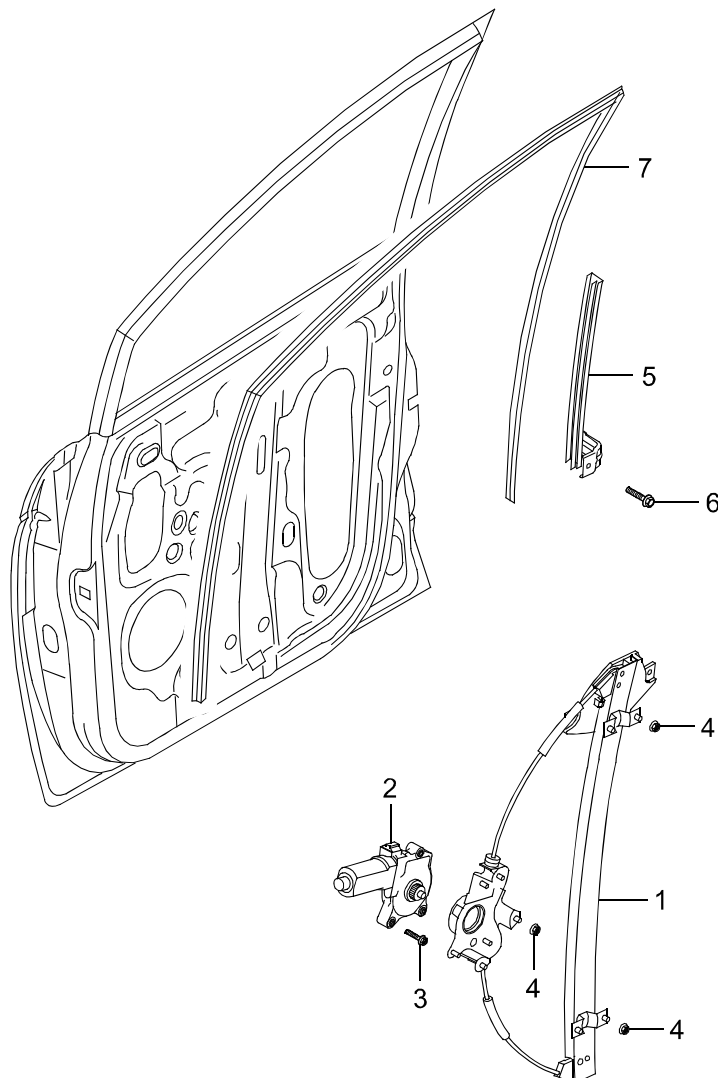
### 7115-00 FRONT DOOR TRIM



- |                                |                                  |
|--------------------------------|----------------------------------|
| 1. PNL assy-FRT DR trim        | 11.Clip                          |
| 2. Weather strip-FRT DR trim   | 12.Screw                         |
| 3. Molding-FRT DR trim UPR     | 20.BRKT-FRT DR pull HDL MTG      |
| 4. PNL assy-A/rest FRT DR trim | 21.BRKT-grip HDL FRT DR trim     |
| 5. Grip handle-FRT DR main     | 22.Cover-FRT DR trim grip HDL    |
| 6. Grip handle-FRT DR sub      | 23.Cap-DR trim                   |
| 7. Screw                       | 24.Grommet                       |
| 8. Lens-DR courtesy FRT        | 25.Screw                         |
| 9. Holder assy-bulb            | 26.Cover-power window switch FRT |
| 10.Bulb                        | 27.Cover-FRT DR pull HDL         |

Modification basis	
Application basis	
Affected VIN	

S.G.N.

**7120-00 FRONT WINDOW LIFTER**

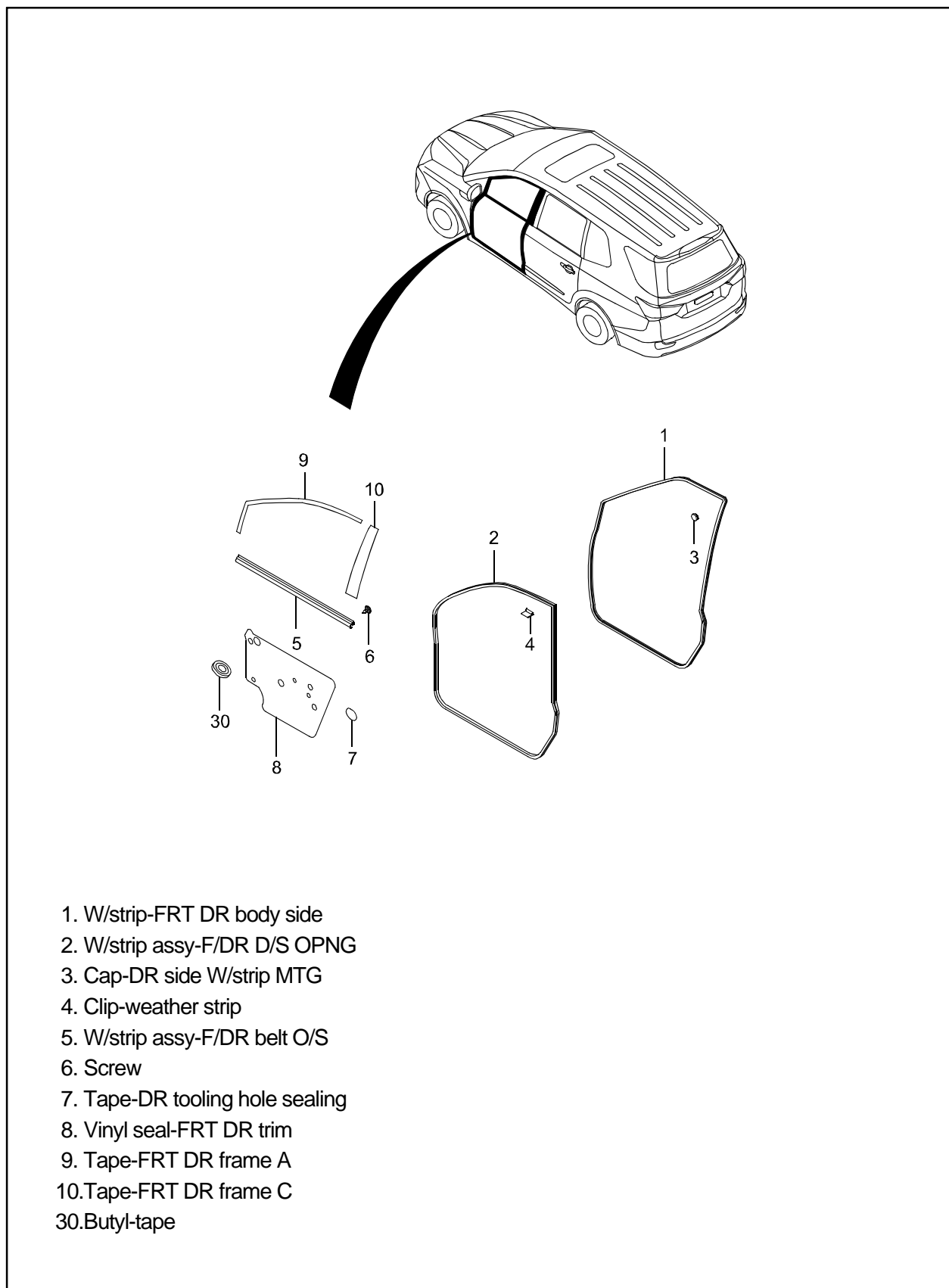
1. Regulator-FRT DR PWR WDW
2. Motor assy-power window
3. Bolt-serrated
4. Nut
5. Rail assy-FRT DR G/guide
6. Bolt
7. Glass run-FRT DR WDW

Modification basis	
Application basis	
Affected VIN	



S.G.N.

# 7121-00 FRONT WEATHER STRIP



Modification basis	
Application basis	
Affected VIN	

S.G.N.

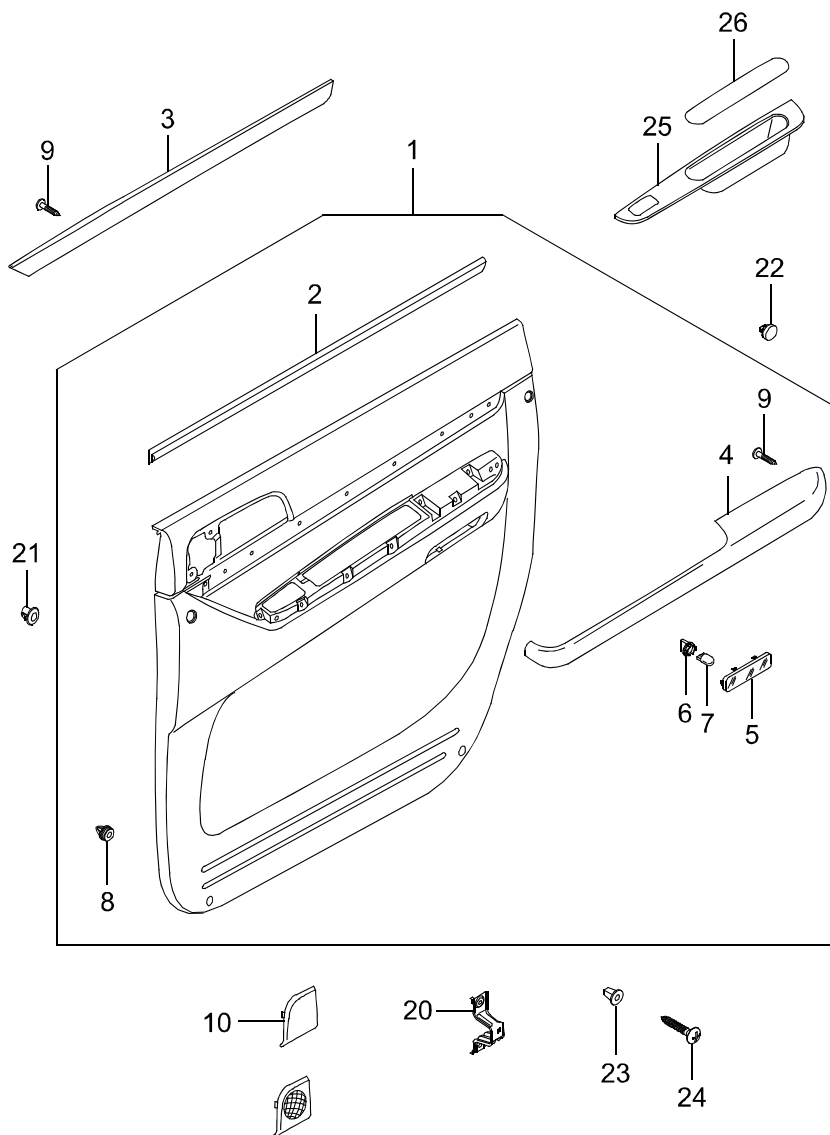
**7215-00 REAR DOOR TRIM**

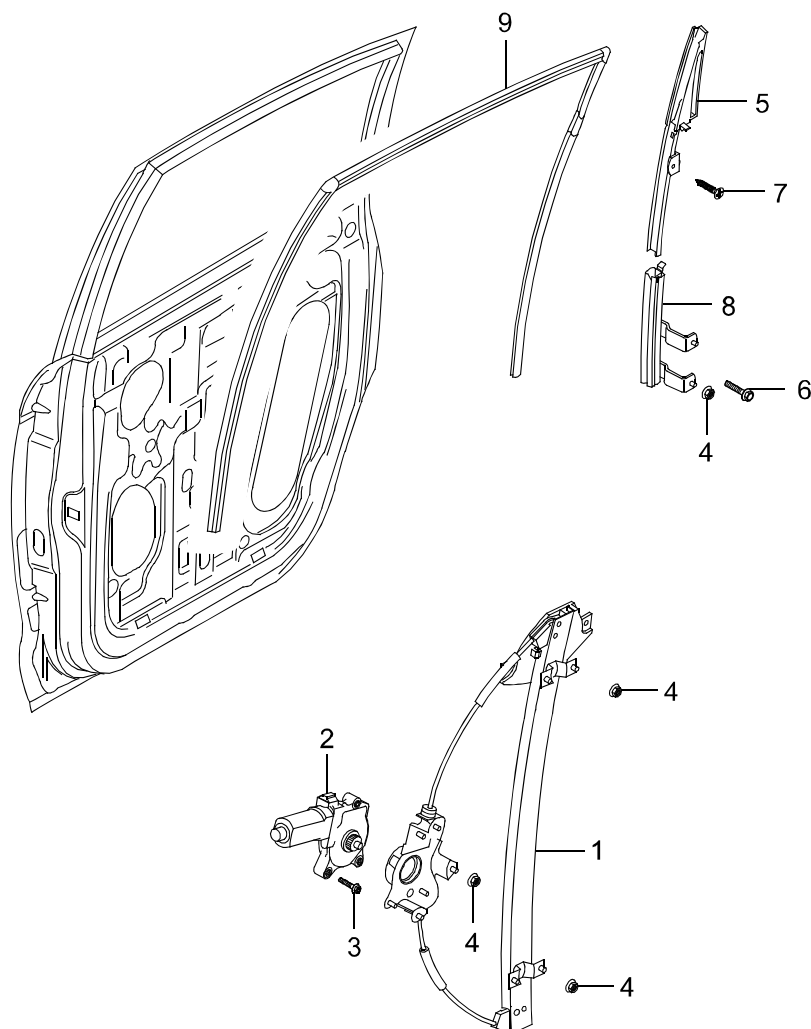
FIG.8610

- |                               |                                  |
|-------------------------------|----------------------------------|
| 1. PNL assy-RR DR trim        | 10. Cover-DR tweeter speaker RR  |
| 2. Weather strip-RR DR trim   | 20. BRKT-RR DR pull HDL MTG      |
| 3. Molding-RR DR trim UPR     | 21. Cap-RR DR trim FRT           |
| 4. PNL assy-A/rest RR DR trim | 22. Cap-DR trim                  |
| 5. Lens-DR courtesy RR        | 23. Grommet                      |
| 6. Holder assy-bulb           | 24. Screw                        |
| 7. Bulb                       | 25. Cover-Power window switch RR |
| 8. Clip                       | 26. Cover-RR DR pull HDL         |
| 9. Screw                      |                                  |

Modification basis	
Application basis	
Affected VIN	

S.G.N.

## 7220-00 REAR WINDOW LIFTER



1. Regulator-R/DR PWR WDW
2. Motor assy-power window
3. Bolt-serrated
4. Nut
5. Rail assy-RR DR delta
6. Screw
7. Bolt
8. Rail assy-RR DR G/guide
9. Glass run-RR DR window

Modification basis	
Application basis	
Affected VIN	

BODY INTERIOR

RODIUS 2016.09

AIR  
CONDITIO

AIR BAG  
SYSTEM

SEAT /  
SEAT

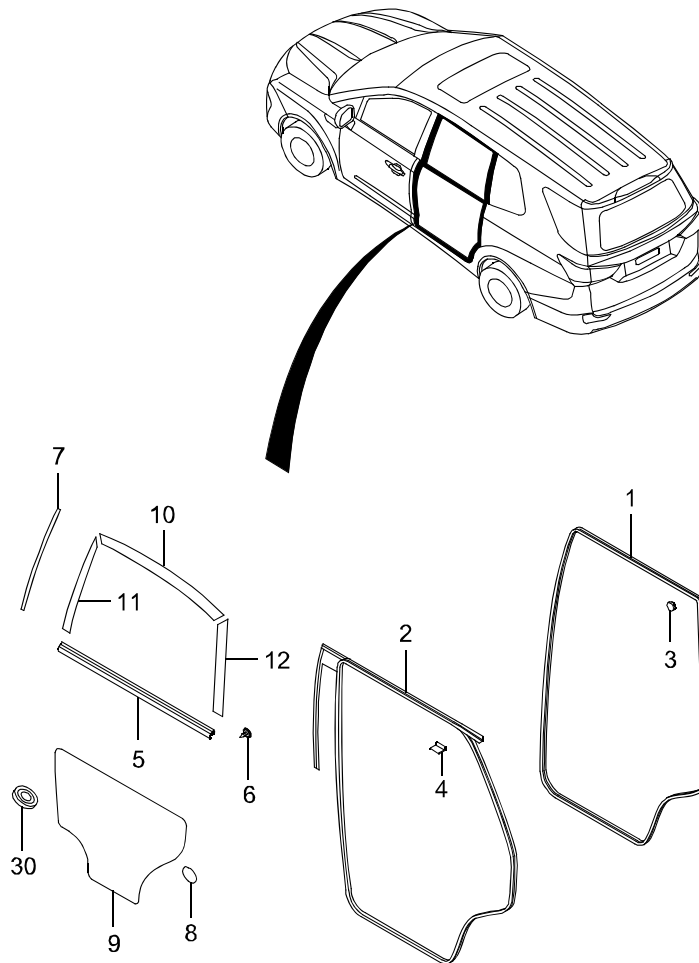
SUNROO  
F

BODY  
INTERIOR

BODY  
EXTERIO

BODY  
REPAIR

S.G.N.

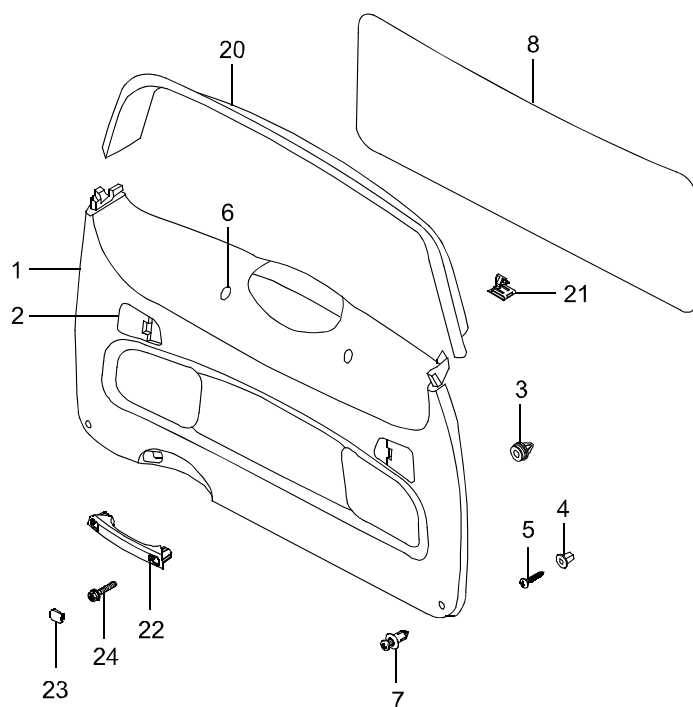
**7221-00 REAR WEATHER STRIP**

1. W/strip-RR DR body side
2. W/strip assy-RR DR opening
3. Cap-DR side W/strip mtg
4. Clip-weather strip
5. W/strip assy-R/DR belt O/S
6. Screw
7. Cover-RR DR D/S strip
8. Tape-DR tooling hole sealing
9. Vinyl seal-RR DR trim
10. Tape-RR DR frame A
11. Tape-RR DR frame B
12. Tape-RR DR frame C
30. Butyl-tape

Modification basis	
Application basis	
Affected VIN	

S.G.N.

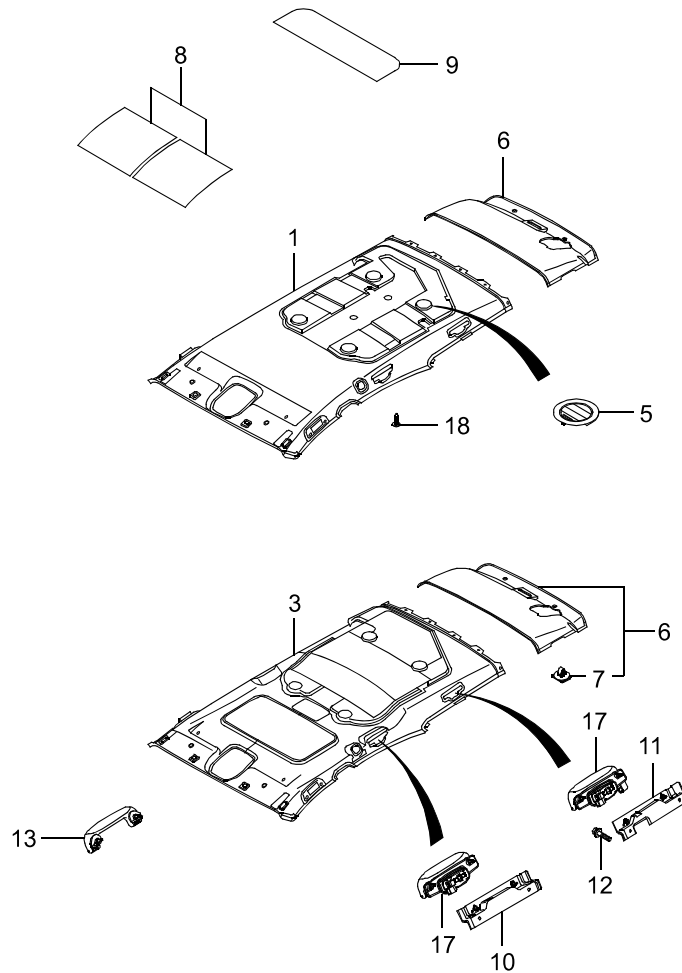
## 7321-00 REAR END TRIM



- 1. Trim assy-T/gate LWR
- 2. Cover-service
- 3. Clip
- 4. Grommet
- 5. Screw
- 6. Cap-T/gate LWR trim
- 7. Scrivet
- 8. Seal trim-tailgate
- 20. Trim assy-T/gate UPR
- 21. Clip-trim
- 22. Grip-tailgate LWR
- 23. Cap-T/gate HDL
- 24. Screw

Modification basis	
Application basis	
Affected VIN	

S.G.N.

**7330-00 HEADLINING**

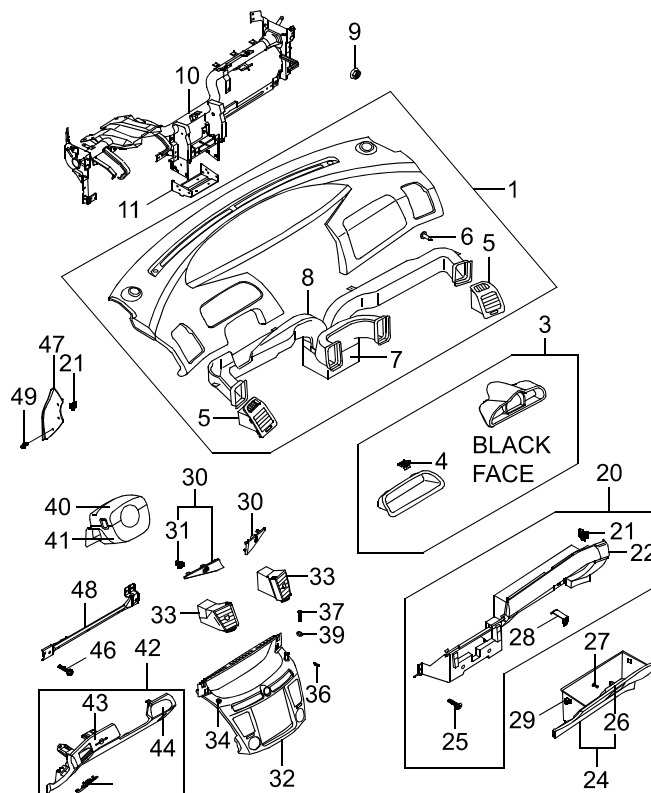
- 1. Headlining assy-FRT
- 3. Head lining assy-sunroof FRT
- 5. Grille assy-air vent
- 6. Head lining assy-RR
- 7. Fastener-tree type
- 8. Insulation -roof FRT

- 9. Insulation -roof RR
- 10. BRKT-grip RR
- 11. BRKT-3rd grip
- 12. Screw
- 13. Grip assy-FRT
- 17. Grip assy-3rd
- 18. Fastener-tree type

Modification basis	
Application basis	
Affected VIN	

S.G.N.

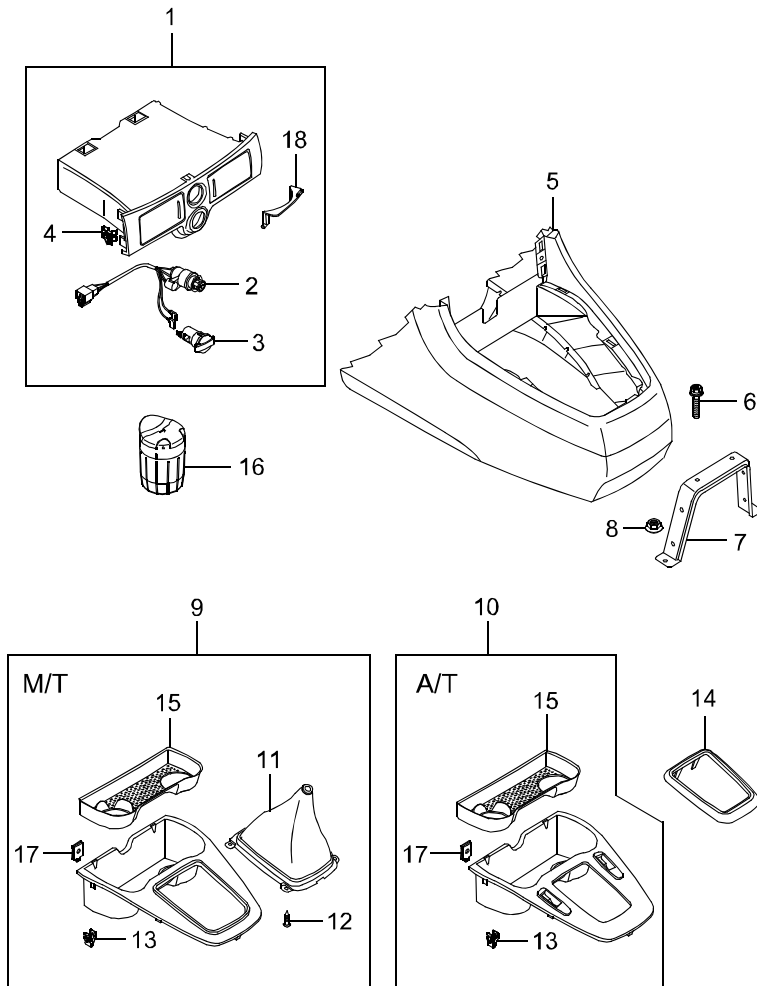
## 7610-00 INSTRUMENT PANEL



- |                                    |                                |
|------------------------------------|--------------------------------|
| 1. Crash pad assy-main             | 30. Grille assy-CTR speaker    |
| 3. PNL assy-warning guide fascia   | 31. Clip-cluster fascia        |
| 4. Clip-warning fascia             | 32. PNL-cluster fascia         |
| 5. PNL assy-side fascia            | 33. Louver assy-CTR A/vent     |
| 6. Screw                           | 34. Cap-trip reset S/W         |
| 7. Junction-def nozzle             | 36. Screw                      |
| 8. Duct-main                       | 37. Grommet-vase flower        |
| 9. Nut                             | 39. Blanking cover-vase flower |
| 10. Cross member assy              | 40. PNL-shroud UPR             |
| 11. BRKT assy-floor MTG            | 41. PNL-shroud LWR             |
| 20. PNL assy-LWR main              | 42. PNL assy-LWR main          |
| 21. Clip                           | 43. Fascia-LWR main no 1       |
| 22. Fascia-LWR main                | 44. Fascia-LWR main no 2       |
| 24. Box assy-glove                 | 45. Cover assy-fuse box        |
| 25. Screw                          | 46. Screw                      |
| 26. Lock assy-glove box            | 47. Cover assy-C/pad side      |
| 27. Screw                          | 48. BRKT assy-knee bolster LWR |
| 28. Striker assy-glove box         | 49. Scrivet                    |
| 29. Stopper assy-glove box housing |                                |

Modification basis	
Application basis	
Affected VIN	

S.G.N.

**7630-00 FRONT CONSOLE**

1. Fascia assy-cup holder
2. Lighter assy-cigar
3. Socket assy-adaptor
4. Clip
5. PNL assy-LWR main CTR
6. Screw
7. BRKT assy-LWR main CTR
8. Nut
9. Fascia assy-LWR main CTR

10. Fascia assy-LWR main CTR
11. Boots assy-LWR main CTR
12. Screw
13. Clip-trim MTG
14. Cover-A/T indicator
15. Mat-LWR main CTR
16. Ash tray
17. Nut
18. Holder-phone

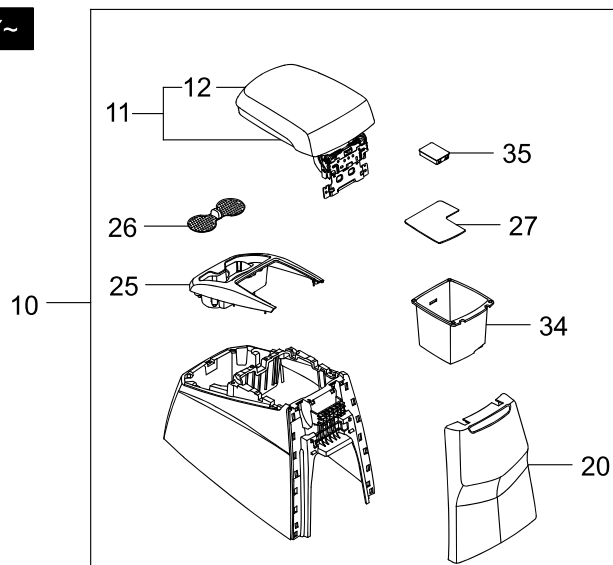
Modification basis	
Application basis	
Affected VIN	



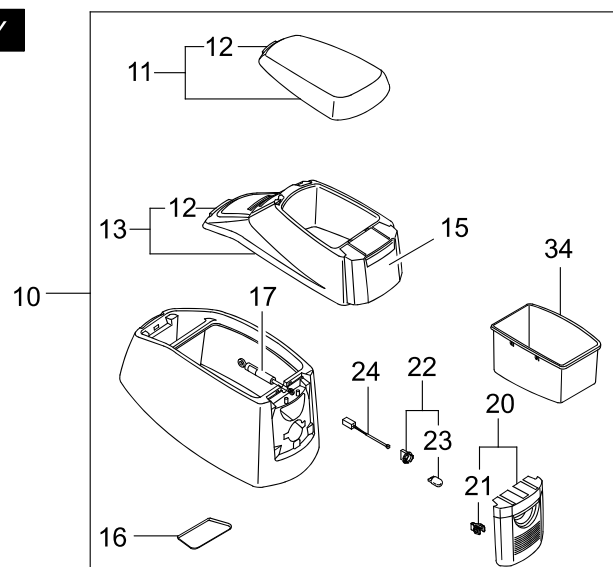
S.G.N.

## 7631-00 REAR CONSOLE

14M/Y~



~14M/Y



10.Console assembly

11.Main armrest assembly

12.Armrest main knob

13.Console lid assembly

15.Console lid rear fascia

16.Console main mat

17.Gas spring

20.Console main rear fascia

21.Console rear fascia clip

22.Bulb holder

23.Bulb

24.Rear foot and speaker extension wiring

25.Fascia assembly-console upper

26.Mat-cup holder

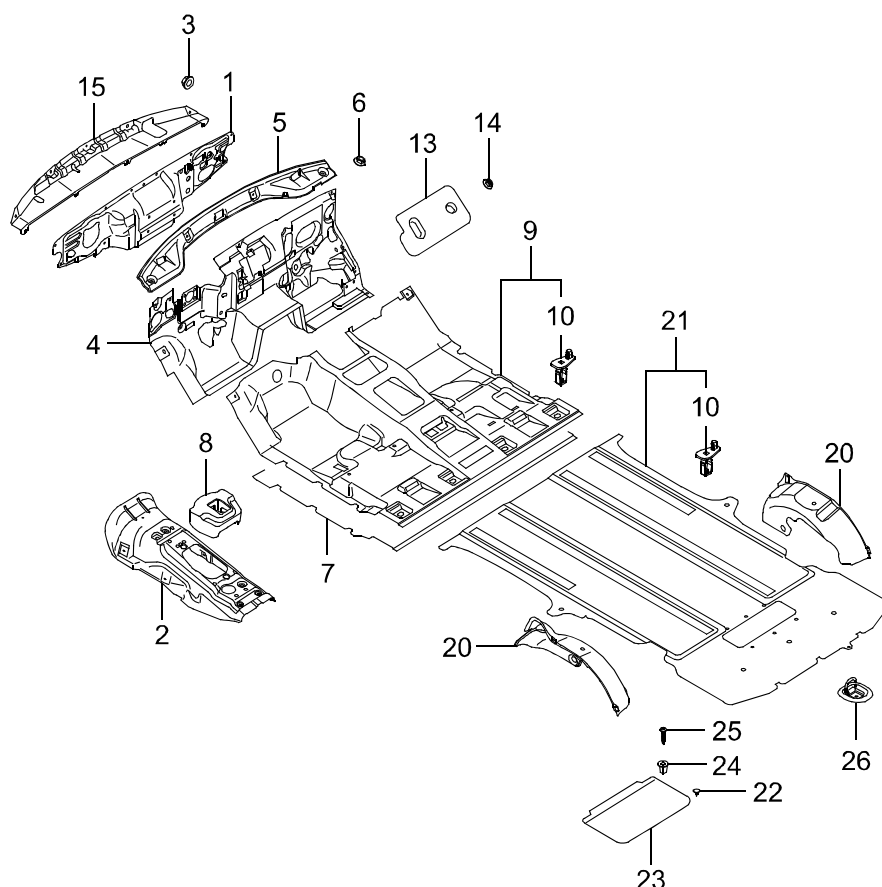
27.Mat-console main tray

34.Tray-console main

35.Blanking cover-immobilizer

Modification basis	
Application basis	
Affected VIN	

S.G.N.

**7710-00 FLOOR CARPET**

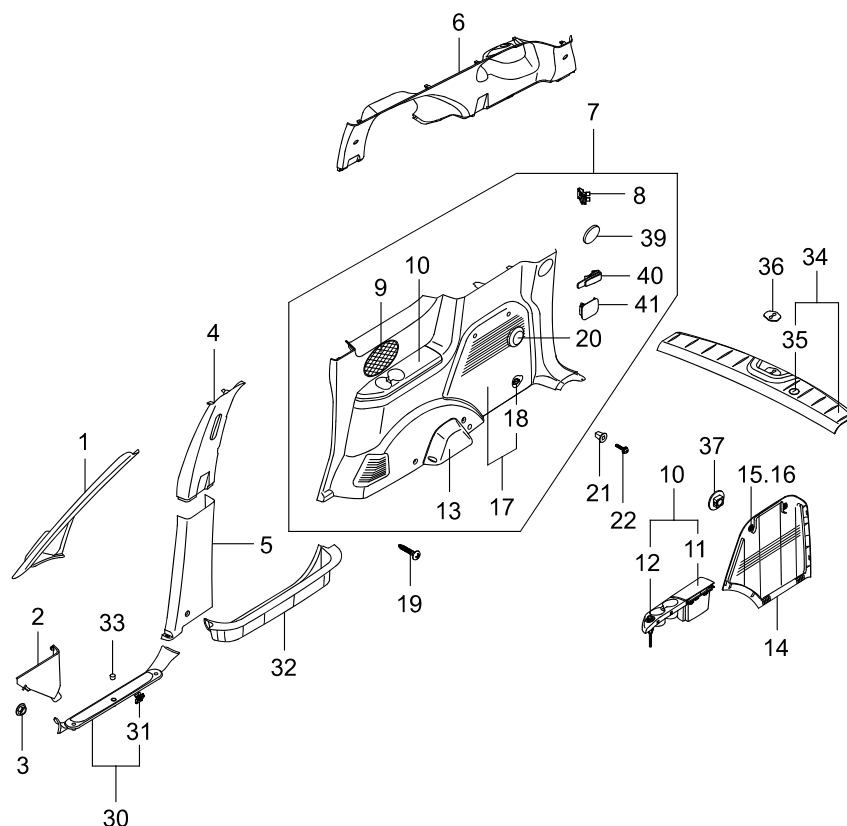
- 1. Insulator assy-ENG room
- 2. Insulator-tunnel OTR
- 3. Nut-flange cap
- 4. Insulator assy-dash INR
- 5. Insulator-dash UPR
- 6. Nut-flange cap
- 7. Insulator assy-FRT floor
- 8. Insulator-t/M housing
- 9. Mat assy-FRT floor
- 10. Hook-service mat

- 13. Protector-passenger foot
- 14. Nut
- 15. Insulator-ENG room UPR
- 20. Insulator-RR wheel house
- 21. Mat assy-RR floor
- 22. Fastener-hood insulation pad
- 23. Cover assy-jack
- 24. Grommet
- 25. Screw
- 26. Hook assy-luggage

Modification basis	
Application basis	
Affected VIN	

S.G.N.

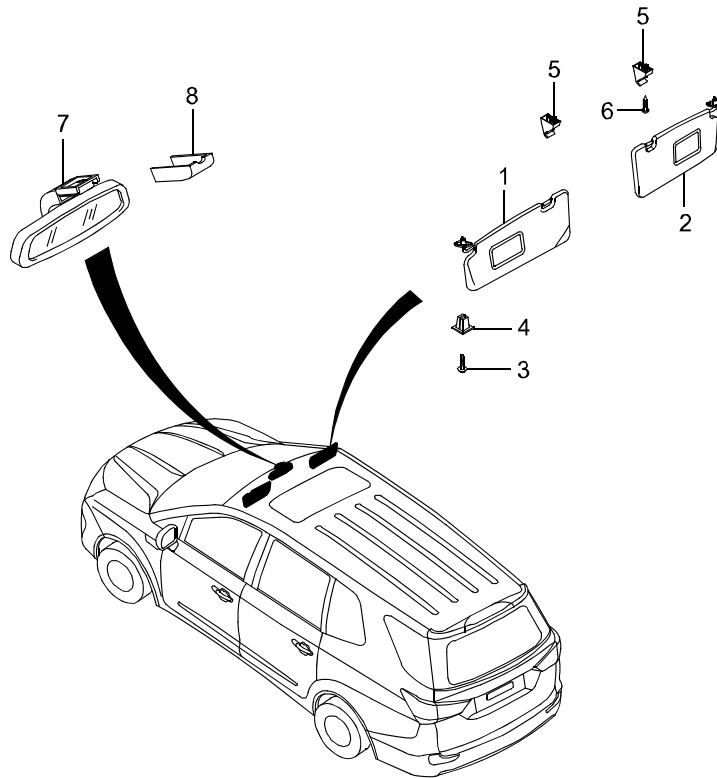
# 7730-00 PILLAR TRIM



- |                            |                                   |
|----------------------------|-----------------------------------|
| 1. Trim assy-A pillar      | 18.Socket assy-power              |
| 2. Trim assy-cowl side     | 19.Screw                          |
| 3. Nut-flange cap          | 20.Cap-HVAC service               |
| 4. Trim assy-B pillar UPR  | 21.Grommet                        |
| 5. Trim assy-B pillar LWR  | 22.Screw                          |
| 6. Trim assy-QTR UPR       | 30.Trim assy-DR scuff FRT         |
| 7. Trim assy-QTR LWR       | 31.Clip                           |
| 8. Clip-trim MTG           | 32.Trim assy-DR scuff RR          |
| 9. Grille assy-QTR LWR     | 33.Cap-trim MTG                   |
| 10.Arm rest assy-QTR LWR   | 34.Trim assy-RR transverse        |
| 11.Lid-QTR LWR armrest     | 35.Cover-spare tire service       |
| 12.Lighter assy-cigar      | 36.Cover-RR transverse blanking   |
| 13.Cover-SHK/ABS service   | 37.Retainer                       |
| 14.Cover assy-tool box     | 39.Seat belt cover                |
| 15.Anchor-tool box         | 40.Seat belt guide                |
| 16.Washer-tool box cover   | 41.Seat belt guide blanking cover |
| 17.Cover assy-hvac service |                                   |

Modification basis	
Application basis	
Affected VIN	

S.G.N.

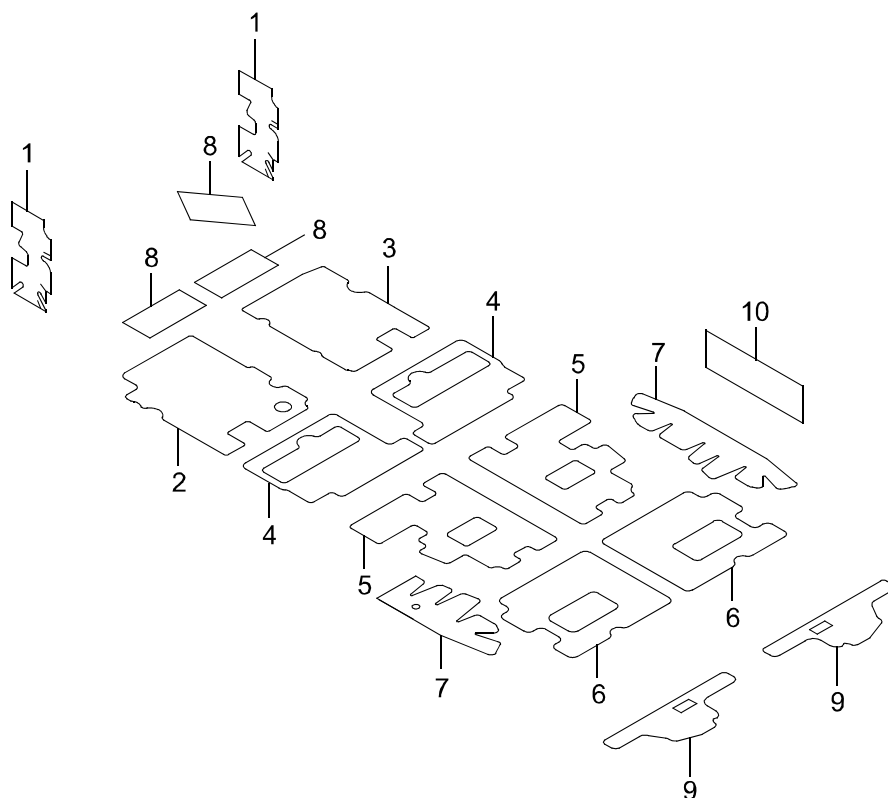
**7770-00** SUN SHADE INSIDE MIRROR

1. Sun visor assy (LH)
2. Sun visor assy (RH)
3. Screw
4. Grommet-screw
5. Retainer
6. Screw
7. Mirror assy-I/S RR view
8. Cover-I/S mirror

Modification basis	
Application basis	
Affected VIN	

S.G.N.

## 7792-00 DEADENER



1. Pad-cowl side INR reinf
2. Pad-FRT floor FRT antivibration
3. Pad-FRT floor FRT antivibration
4. Pad-RR floor FRT antivibration
5. Pad-RR floor CTR antivibration
6. Pad-RR floor RR antivibration
7. Pad-RR wheel house INR antivibration
8. Pad-antivibration
9. Pad-RR end floor antivibration
10. Pad-QTR OTR antivibration

Modification basis	
Application basis	
Affected VIN	

BODY INTERIOR

RODIUS 2016.09

AIR  
CONDITIO

AIR BAG  
SYSTEM

SEAT /  
SEAT

SUNROO  
F

BODY  
INTERIOR

BODY  
EXTERIO

BODY  
REPAIR

## REMOVAL AND INSTALLATION

S.G.N.

### 7115-01 FRONT DOOR TRIM PANEL ASSEMBLY

**Preceding work** - Disconnect the negative battery cable.



1. Prize off the front door inside handle bezel from the bottom using the remover.



2. Remove the grip handle cover for the front door trim.



3. Unscrew the 4 mounting screws on the front door trim panel.



4. Remove the door trim cap (A) and unscrew the one front door trim panel mounting screw (B).



5. Unscrew the mounting screw in the power window main switch front cover.

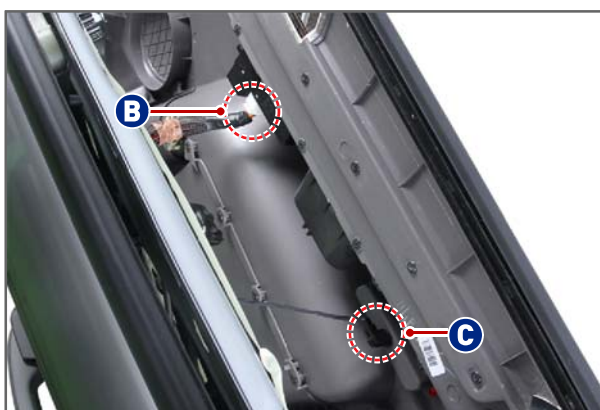


6. Unscrew the 2 lower mounting screws on the front door trim panel.

Modification basis	
Application basis	
Affected VIN	



7. Prize off the front door trim panel out of the front door panel and disconnect the outside mirror switch connector (A), the power window main switch connector (B) and the door scuff lamp connector (C).



8. Remove the front door trim panel.



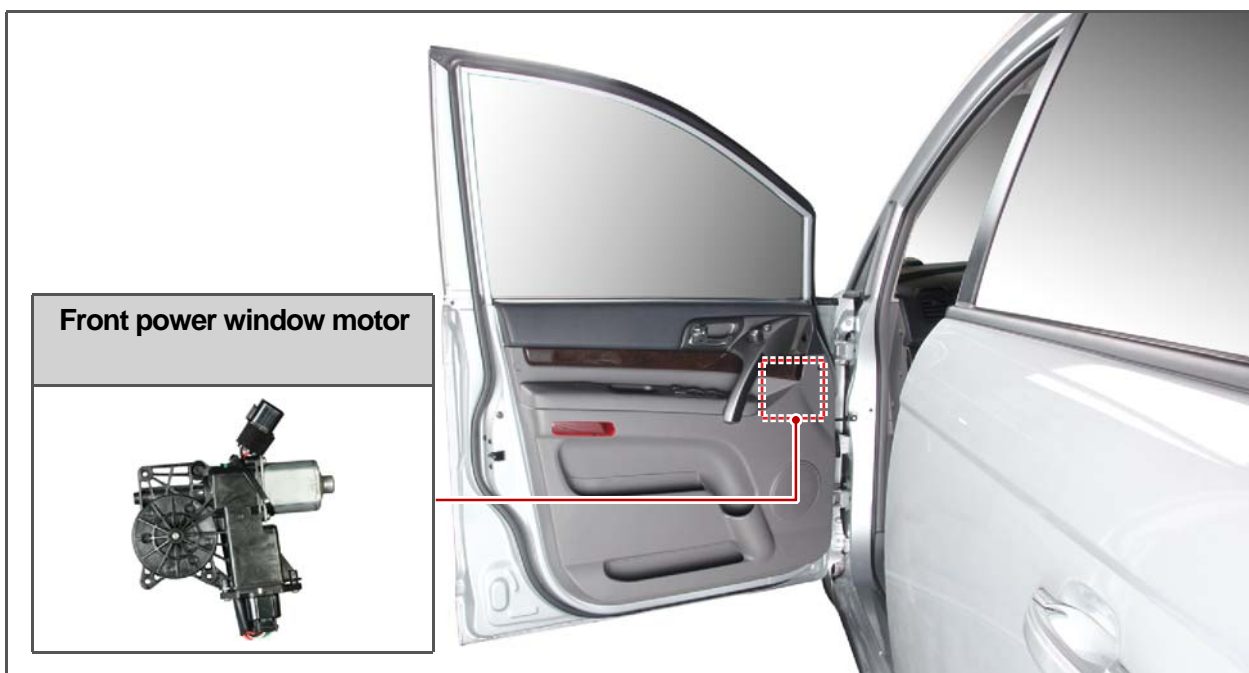
9. Installation is in the reverse order of removal.



S.G.N.

## 7120-02 FRONT POWER WINDOW MOTOR

**Preceding work** - Disconnect the negative battery cable.

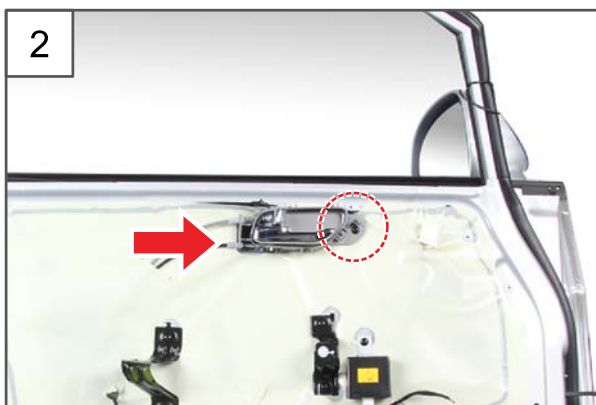


1. Remove the front door trim panel.



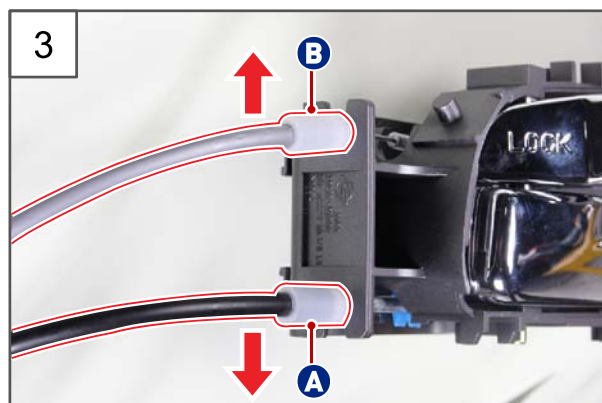
### NOTE

Refer to "FRONT DOOR TRIM PANEL" under "REMOVAL AND INSTALLATION" in "BODY INTERIOR" chapter.



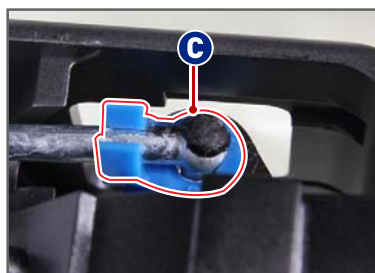
2. Loosen the door inside handle mounting screw and push it towards the front door hinge.

Modification basis	
Application basis	
Affected VIN	

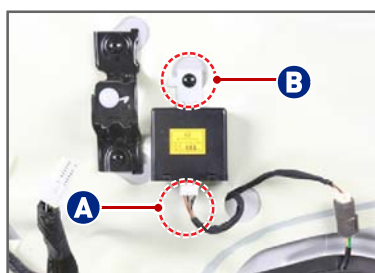


3. Push the cables (A and B) to remove it from the fastening (C) then remove the door inside handle.

- A. Front door safety lock cable (black)
- B. Front door inside handle cable (grey)

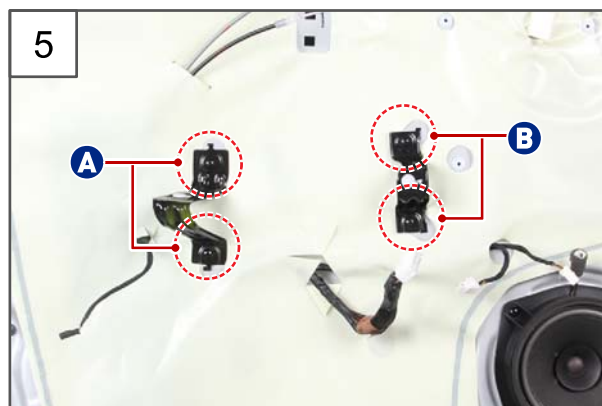


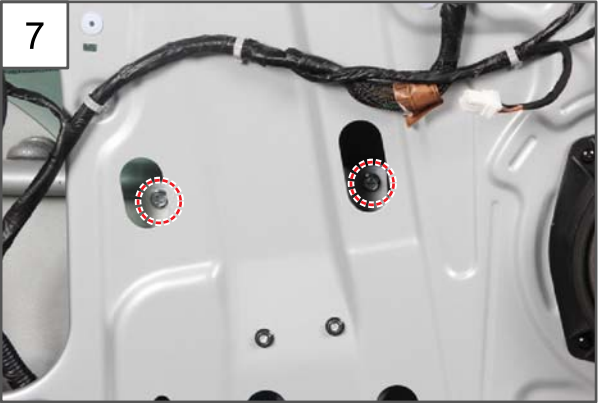
4. Disconnect the outside folding unit connector (A) and remove the outside folding unit by unscrewing the mounting screw (B).



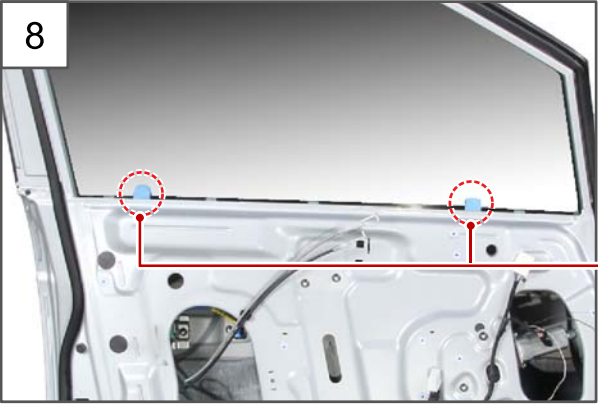
5. Unscrew the mounting screws (A and B) to remove the grip handle front door trim bracket and the front door pull handle mounting bracket.

- A. 2 grip handle front door trim bracket mounting screws
- B. 2 front door pull handle mounting bracket mounting screws

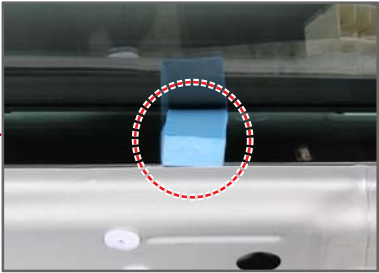




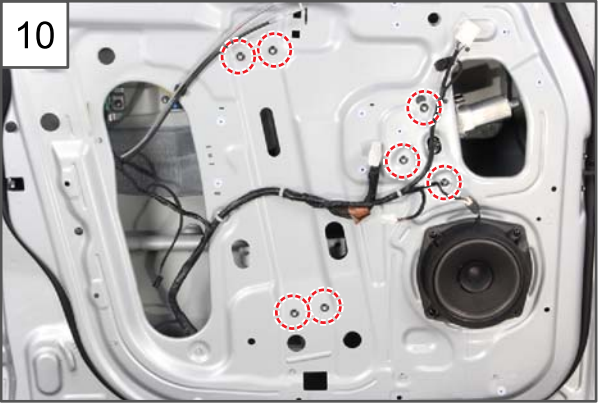
7. Position the front door glass mounting grommet to the front door panel service hole and unscrew the 2 mounting bolts (10 mm).



8. Lift the front door glass up to the top part and secure it completely using the pad.

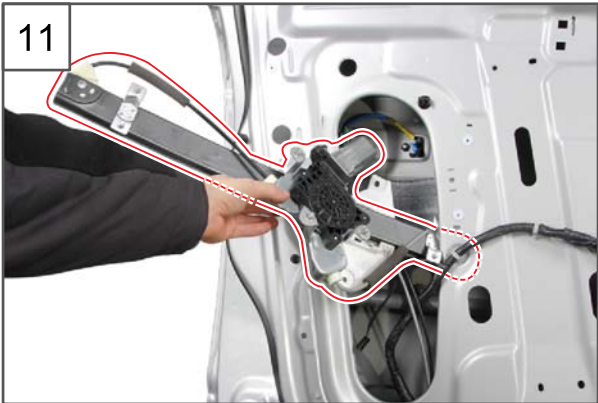


9. Disconnect the front power window motor connector.

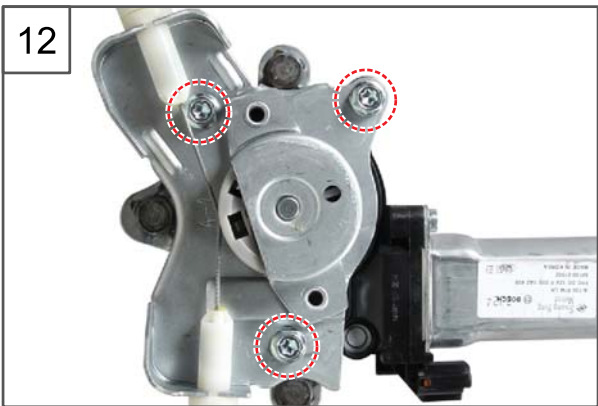


10. Unscrew the 7 mounting nuts (10 mm) on the front power window regulator.

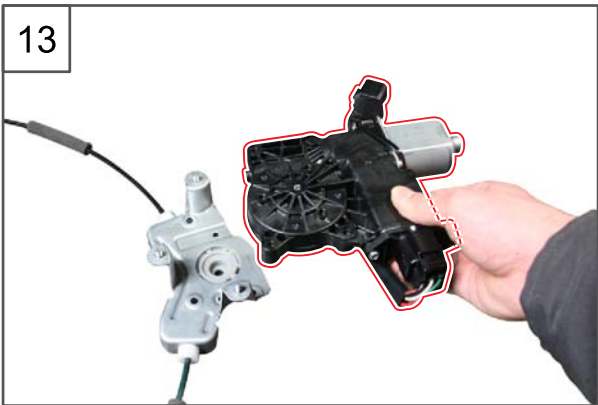
Modification basis	
Application basis	
Affected VIN	



11.Remove the front power window regulator.



12.Unscrew the 3 mounting bolts (10 mm) on the front power window motor.



13.Remove the front power window motor.



14.Installation is in the reverse order of removal.

Modification basis	
Application basis	
Affected VIN	

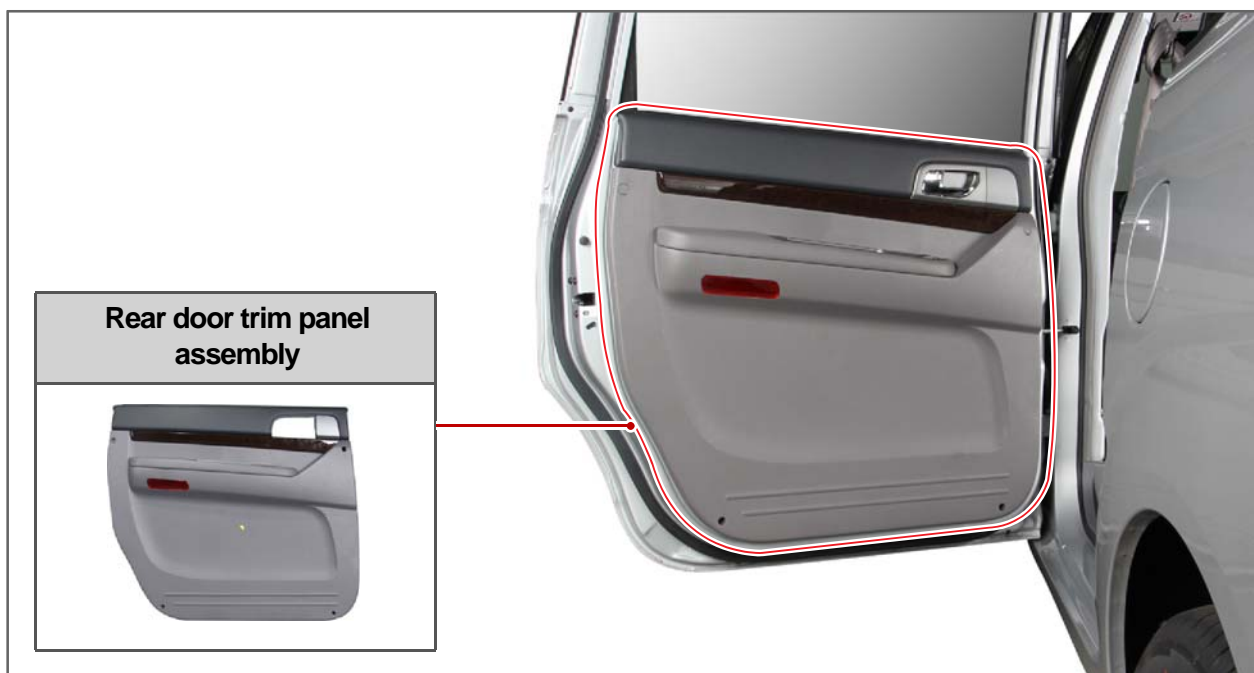


S.G.N.

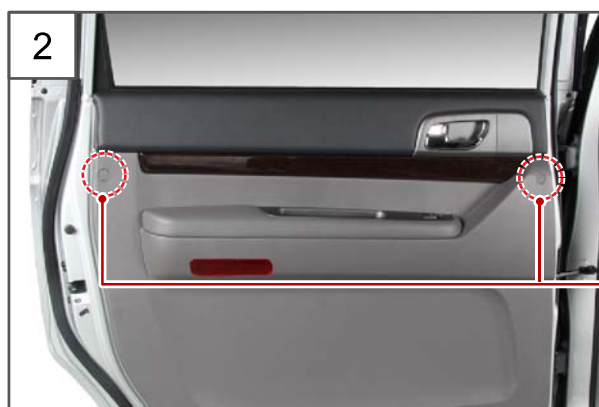
## 7215-01 REAR DOOR TRIM PANEL ASSEMBLY

Preceding work

- Disconnect the negative battery cable.



1. Prize off the rear door inside handle bezel from the bottom using the remover.



2. Remove the 2 door trim caps.



Modification basis	
Application basis	
Affected VIN	



3. Unscrew the 2 mounting screws on the rear door trim panel.



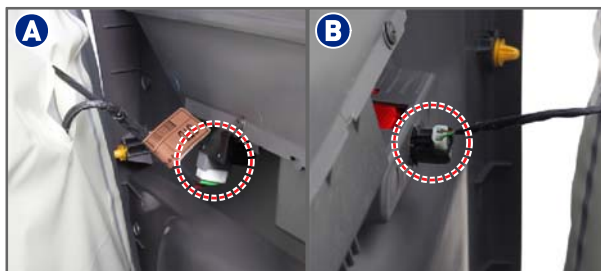
4. Unscrew the mounting screw in the power window switch rear cover.



5. Unscrew the 2 lower mounting screws on the rear door trim panel.



6. Prize off the rear door trim panel out of the rear door panel and disconnect the power window switch connector (A) and door scuff lamp connector (B).





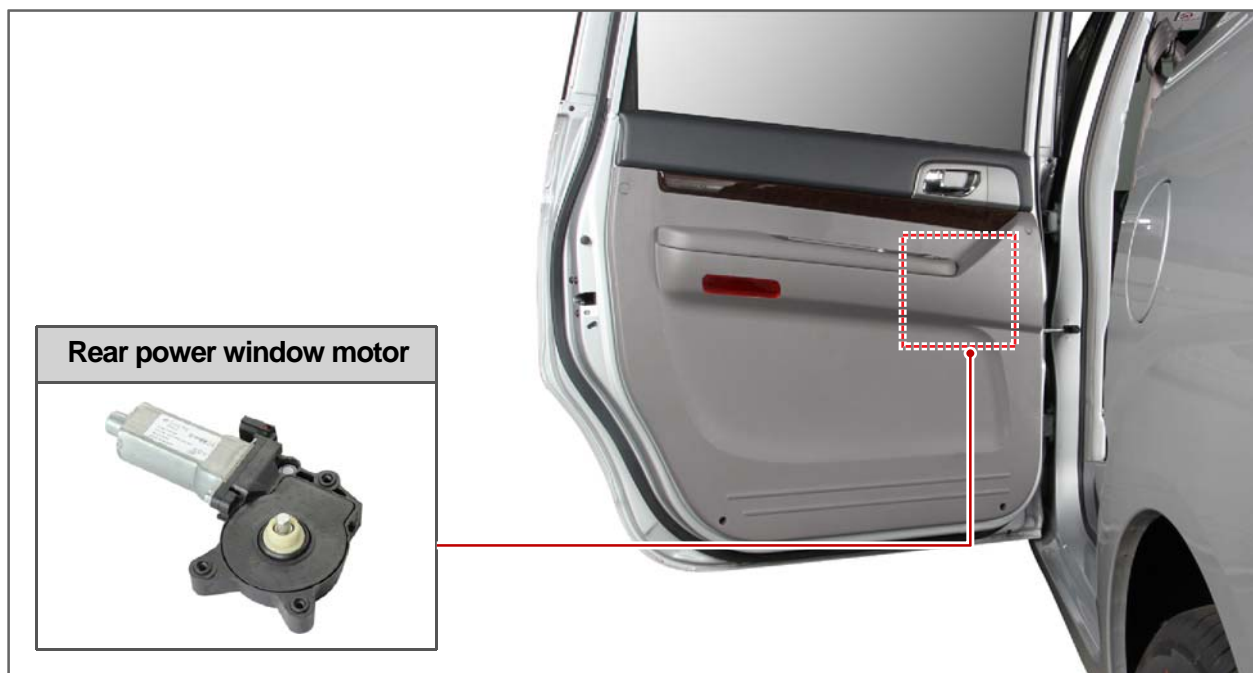
7. Remove the rear door trim panel.



8. Installation is in the reverse order of removal.

Modification basis	
Application basis	
Affected VIN	

S.G.N.

**7220-02 REAR POWER WINDOW MOTOR****Preceding work** - Disconnect the negative battery cable.

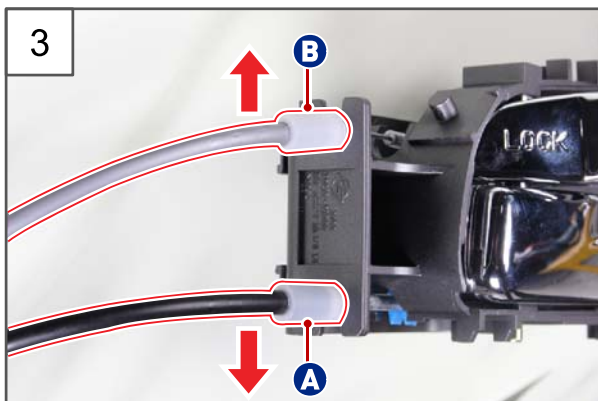
1. Remove the rear door trim panel.



2. Loosen the door inside handle mounting screw and push it towards the rear door hinge.

Modification basis	
Application basis	
Affected VIN	



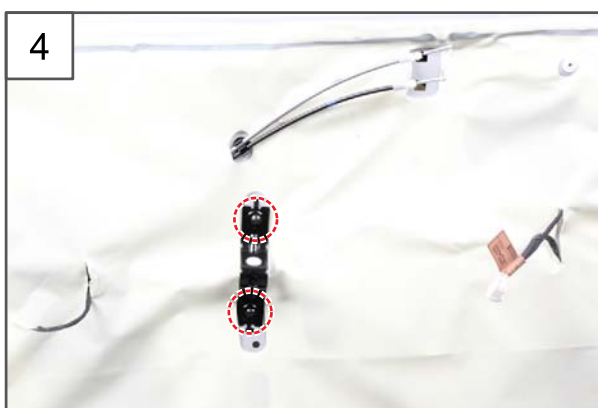


3. Push the cables (A and B) to remove it from the fastening (C) then remove the door inside handle.

- A. Rear door safety lock cable (black)
- B. Rear door inside handle cable (grey)



4. Unscrew the 2 mounting screws to remove the rear door pull handle mounting bracket.



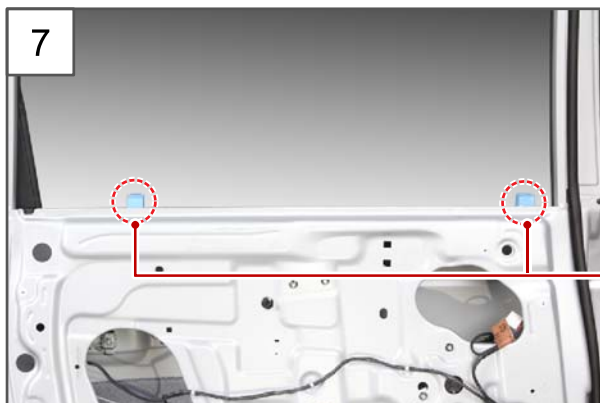
5. Remove the rear door trim vinyl seal.



6. Position the rear door glass mounting grommet to the rear door panel service hole and unscrew the 2 mounting bolts (10 mm).



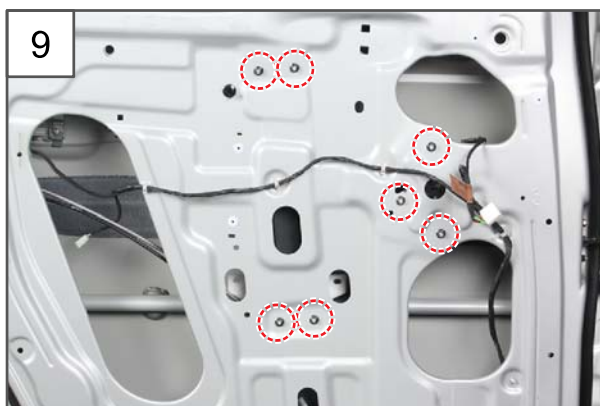
Modification basis	
Application basis	
Affected VIN	



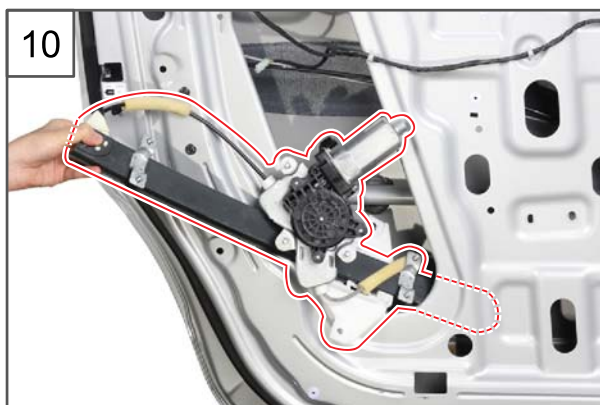
7. Lift the rear door glass up to the top part and secure it completely using the pad.



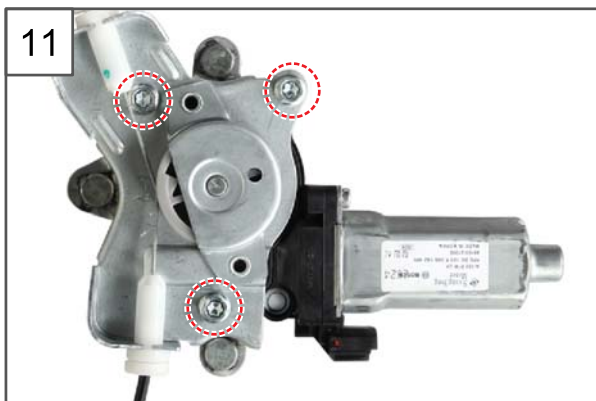
8. Disconnect the rear power window motor connector.



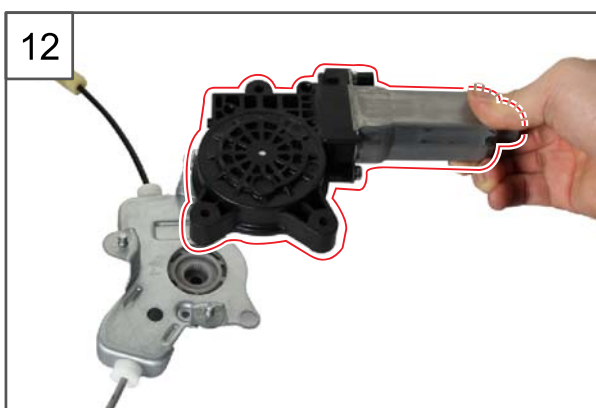
9. Unscrew the 7 mounting nuts (10 mm) on the rear power window regulator.



10. Remove the rear power window regulator.



11. Unscrew the 3 mounting bolts (10 mm) on the rear power window motor.



12.Remove the rear power window motor.



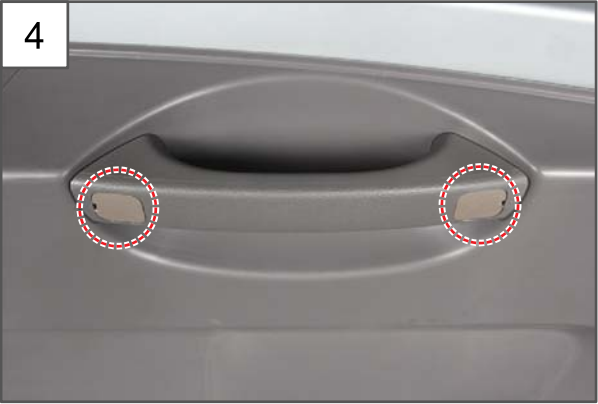
13.Installation is in the reverse order of removal.

Modification basis	
Application basis	
Affected VIN	

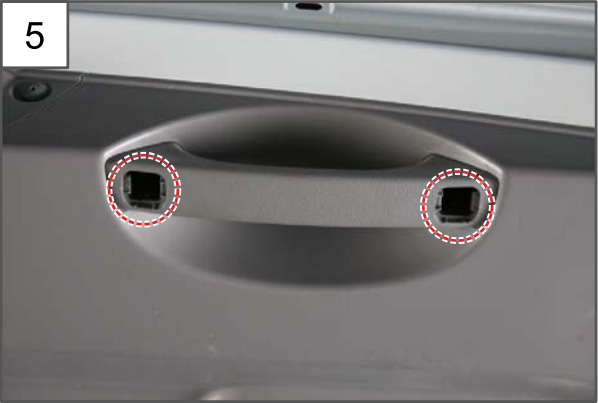
**7321-01 TAILGATE LOWER TRIM PANEL**



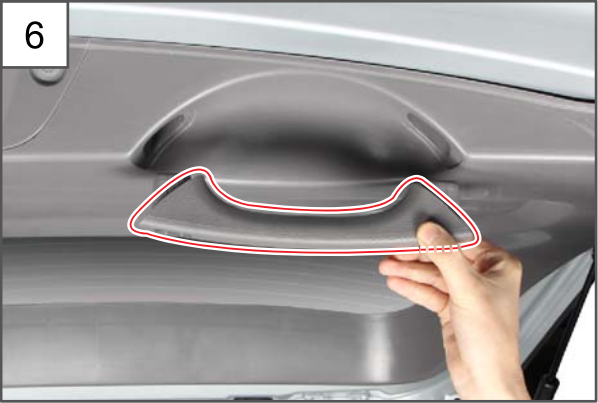
3. Remove the tailgate upper trim.



4. Remove the 2 tailgate handle caps.



5. Unscrew the 2 mounting bolts (10 mm) on the tailgate handle.



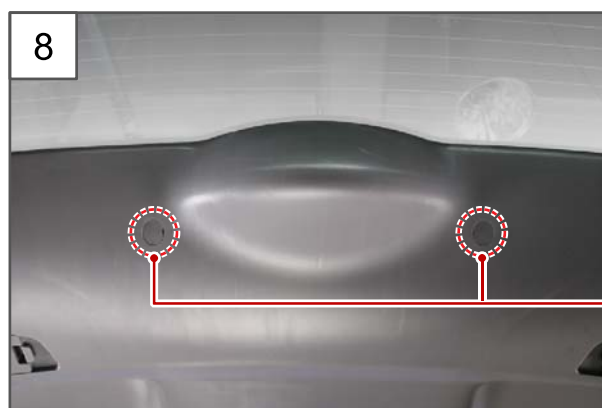
6. Remove the tailgate handle.

Modification basis	
Application basis	
Affected VIN	

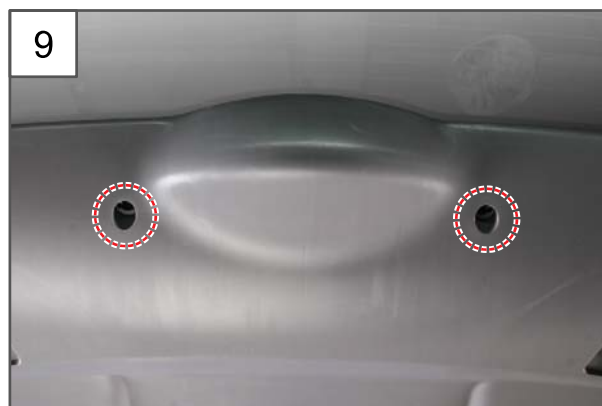
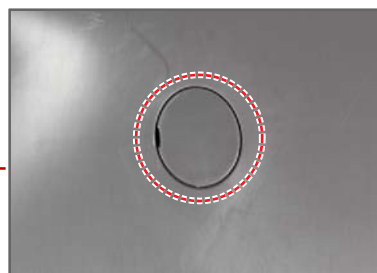




7. Remove the 2 lower mounting screw rivets on the tailgate lower trim.



8. Remove the 2 tailgate lower trim caps.



9. Remove the 2 upper mounting screws on the tailgate upper trim.



10. Remove the tailgate lower trim.



11.Installation is in the reverse order of removal.

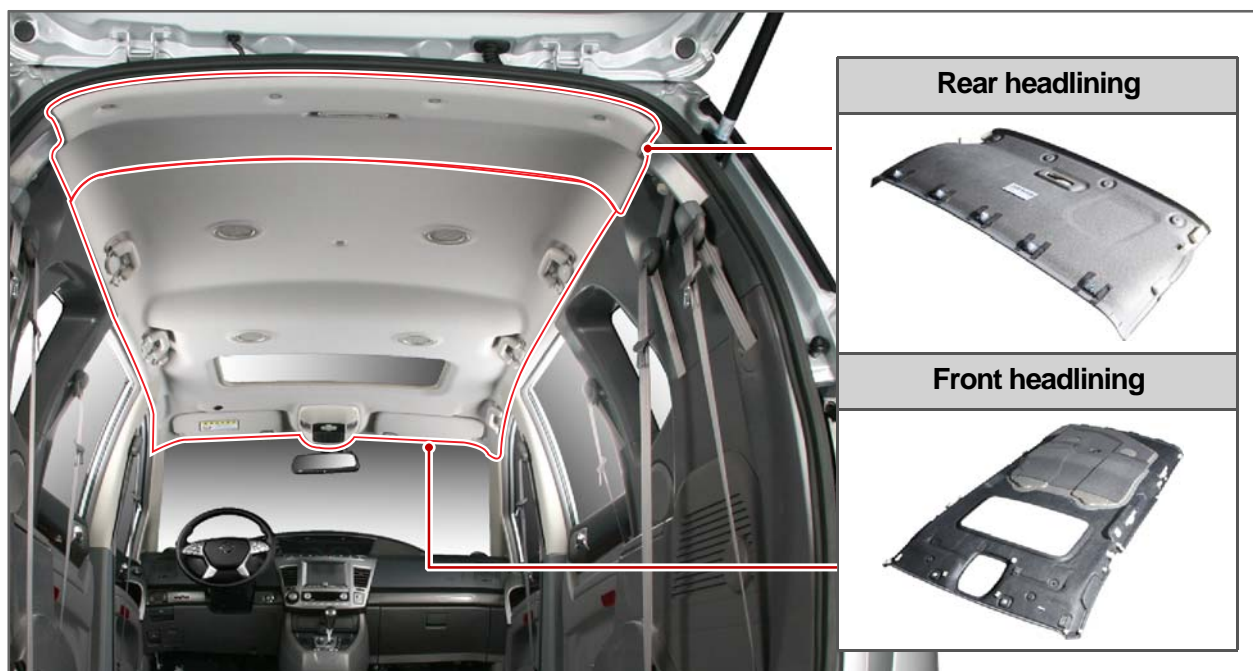
Modification basis	
Application basis	
Affected VIN	

S.G.N.

**7330-03 HEADLINING**

Preceding work

- Disconnect the negative battery cable.



1. Remove the left/right rear 2nd row seats.

**NOTE**

Refer to "REAR 1ST ROW SEAT" section under "REMOVAL AND INSTALLATION" in "SEAT" chapter.



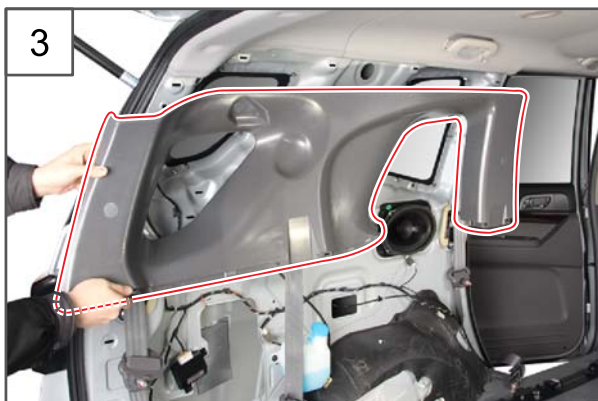
2. Remove the rear 3rd row seat.

**NOTE**

Refer to "REAR 3RD ROW SEAT" section under "REMOVAL AND INSTALLATION" in "SEAT" chapter.

Modification basis	
Application basis	
Affected VIN	





3. Remove the LH/RH quarter upper trims.



**NOTE**

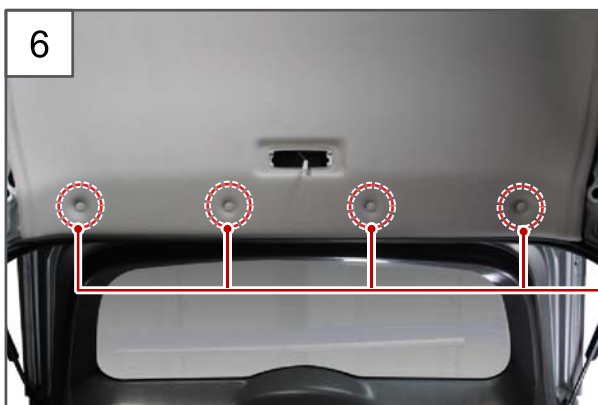
Refer to "QUARTER UPPER TRIM" section under "REMOVAL AND INSTALLATION" in "BODY INTERIOR".



4. Prize off the rear room lamp using the remover.



5. Disconnect the rear room lamp connector and remove the rear room lamp.



6. Remove the 4 rear headlining mounting fasteners using the remover.



Modification basis	
Application basis	
Affected VIN	



7. Remove the rear headlining.



8. Remove the LH/RH B-pillar upper trims.

**NOTE**

Refer to "B-PILLAR UPPER TRIM" section under "REMOVAL AND INSTALLATION" in "BODY INTERIOR".



9. Remove the LH/RH A-pillar trims.



10. Unscrew the 3 mounting bolts (10 mm) on the rear cooler duct.


Modification basis	
Application basis	
Affected VIN	



11.Remove the rear cooler duct.

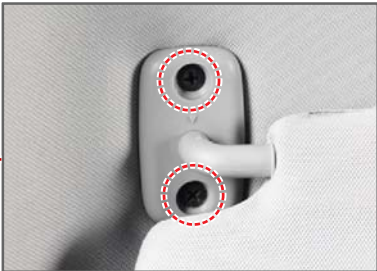


12.Remove the passenger grip (1 off) and rear grips (4 off).

 **NOTE**  
Refer to "GRIP" under "REMOVAL AND INSTALLATION" in "BODY INTERIOR" chapter.



13.Unscrew the 2 LH/RH sun visor mounting screws.



14.Remove the LH and RH sun visors.

Modification basis	
Application basis	
Affected VIN	

15



15. Unscrew the LH/RH mounting screws on the sun visor retainers.

16



16. Remove the LH and RH sun visor retainers.

17



17. Remove the overhead console.

**NOTE**

Refer to "FRONT ROOM LAMP (INTEGRATED WITH OVERHEAD CONSOLE)" section under "REMOVAL AND INSTALLATION" in "LAMP".

18



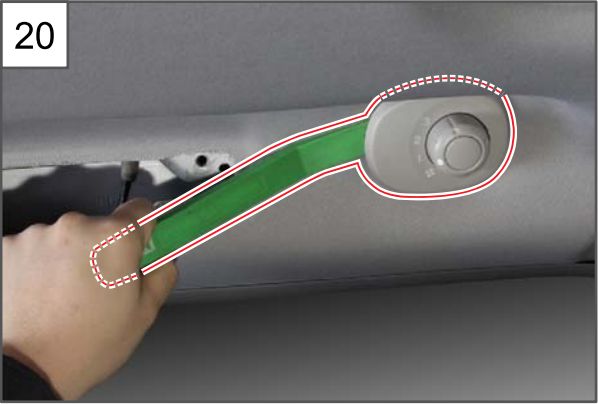
18. Disconnect the handsfree microphone connector.

Modification basis	
Application basis	
Affected VIN	

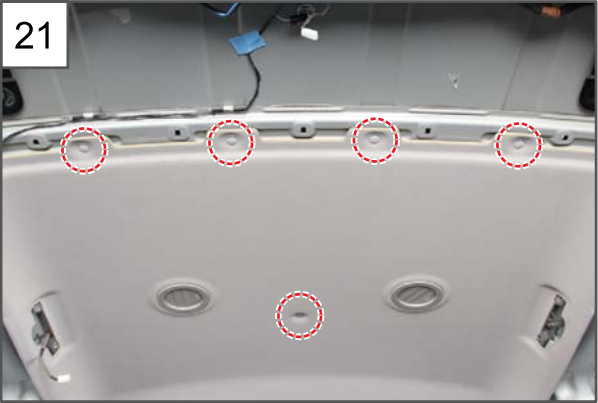




19.Prize off and remove the handsfree microphone using the remover.



20.Prize off and remove the rear blower switch using the remover.

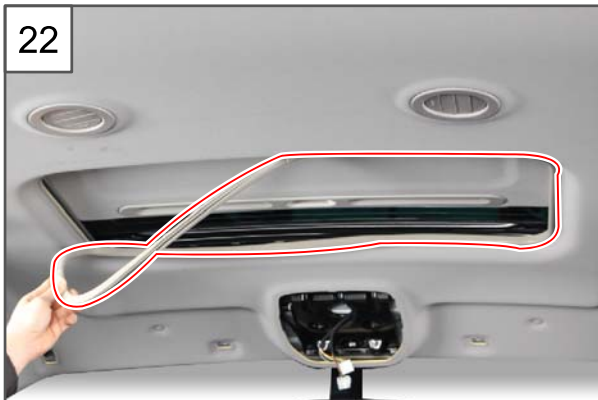


21.Undo the front headlining mounting fasteners (2 off for front and 5 off for rear).



Modification basis	
Application basis	
Affected VIN	

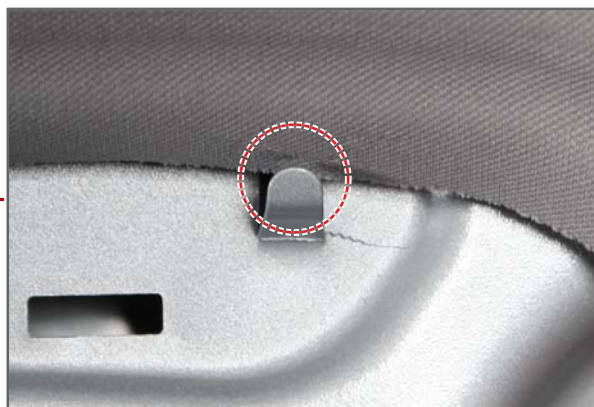
22



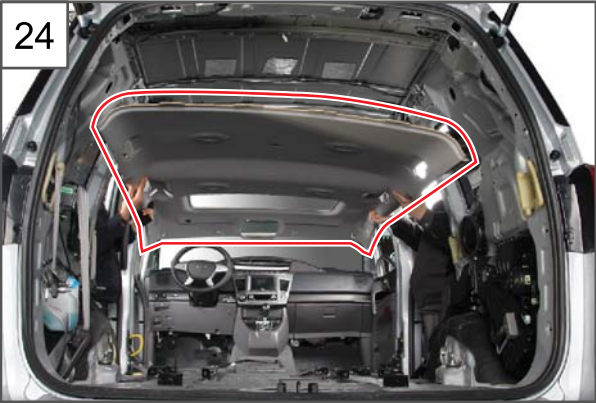
22.Remove the sunroof welt.

23.Remove the front headlining from the LH/RH B-pillar headlining hook by raising it.

23



Modification basis	
Application basis	
Affected VIN	



24.Remove the front headlining.



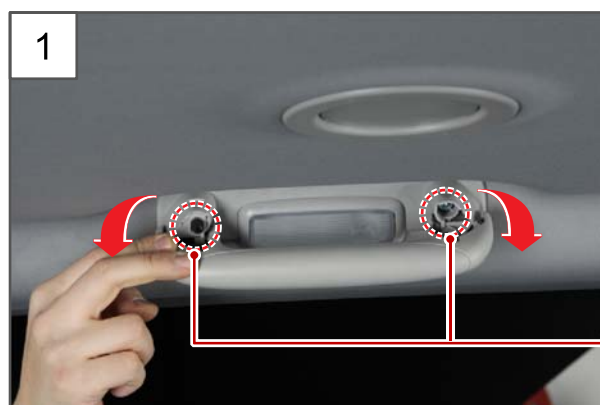
25.Installation is in the reverse order of removal.



Modification basis	
Application basis	
Affected VIN	

## 7330-17 GRIP ASSEMBLY

**Preceding work** - Disconnect the negative battery cable.



1. Lower the grip down, open the cap and unscrew the 2 mounting screws (A).



2. Disconnect the interior lamp connector and remove the grip.



### NOTE

The grips for rear 1st row and 2nd row seat belts, except for the passenger grip, are provided with the interior lamp.

Modification basis	
Application basis	
Affected VIN	





3. Installation is in the reverse order of removal.

Modification basis	
Application basis	
Affected VIN	

S.G.N.

## 7610-01 INSTRUMENT PANEL ASSEMBLY

### Preceding work

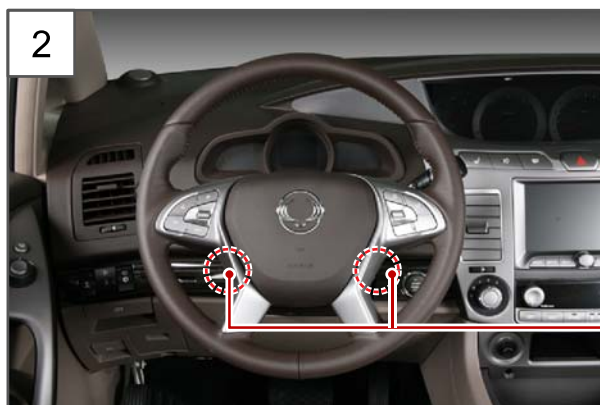
- Disconnect the negative battery cable.



1. Remove the rear console.

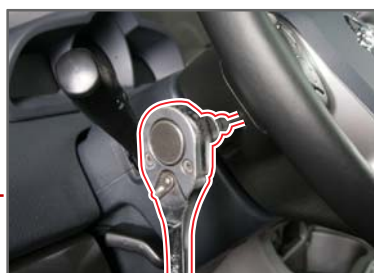
### NOTE

Refer to "REAR CONSOLE" under "REMOVAL AND INSTALLATION" in "BODY INTERIOR" chapter



2. Unscrew the 2 driver's air bag module mounting bolts (10 mm).

**Tightening torque 6.8 to 10.8 Nm**



Modification basis	
Application basis	
Affected VIN	



3. Pull up the driver's air bag module to disconnect the inflator connector (A) and horn connector (B).



4. Remove the driver air bag module.



5. Disconnect the steering wheel switch connector(A).



6. Make a paint marking and unscrew the one steering wheel mounting nut (22 mm).

**Tightening torque 39.2 to 59.8 Nm**

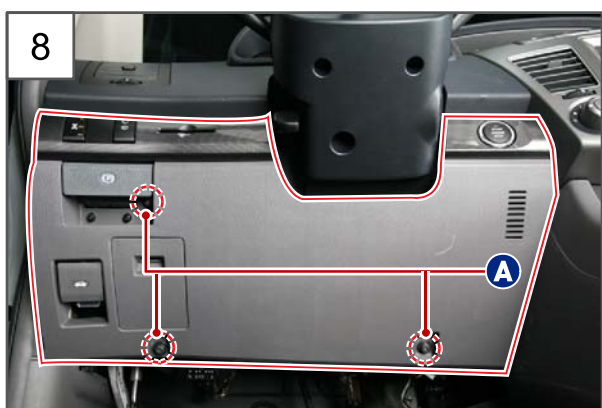


Modification basis	
Application basis	
Affected VIN	



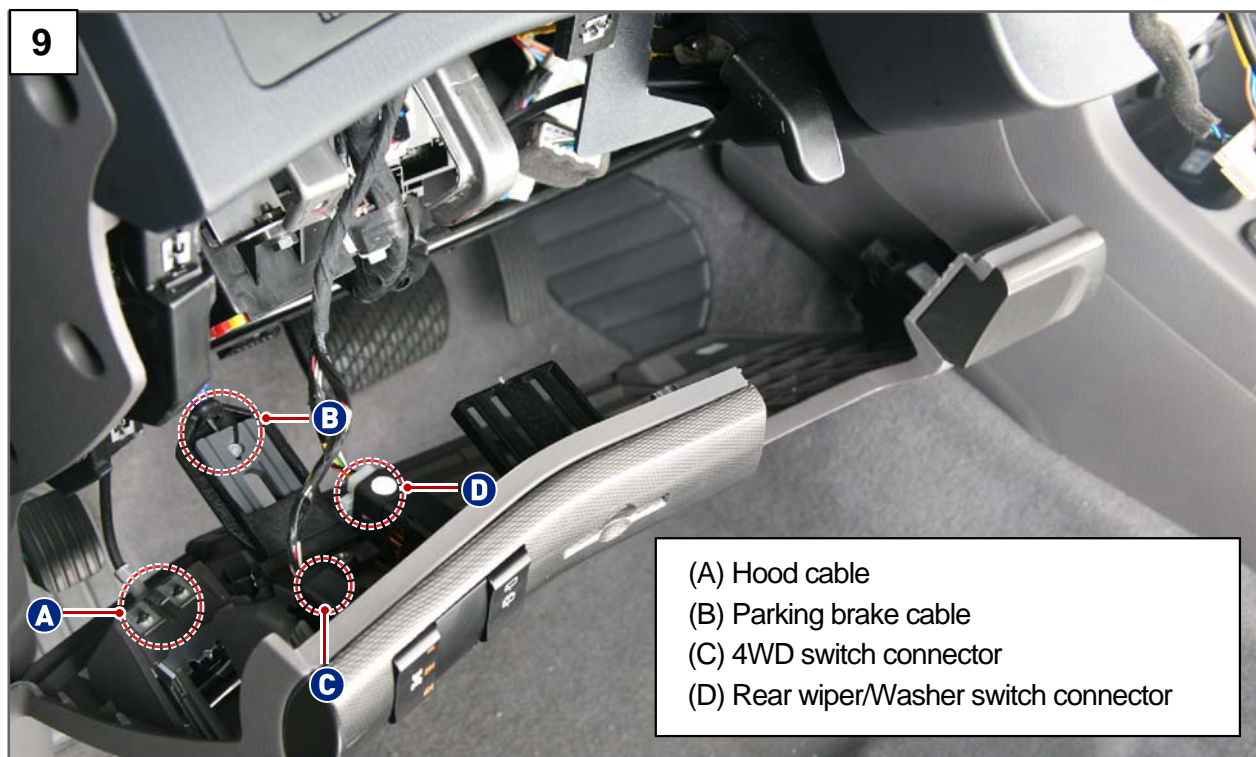


7. Remove the steering wheel.



8. Unscrew the 3 fastening bolts (A, 10 mm) to remove the LH lower main panel.

9. Disconnect the connectors (A, B, C, D) connected to the left lower main panel.

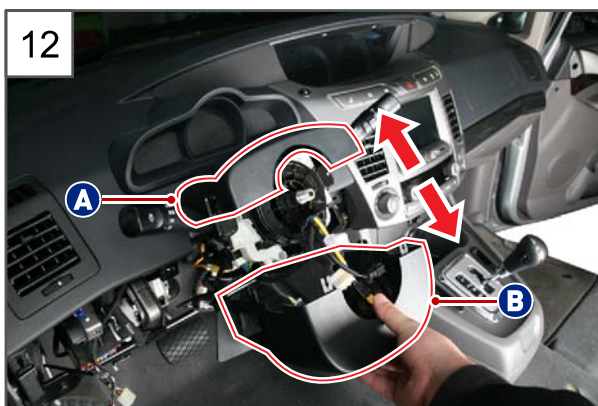




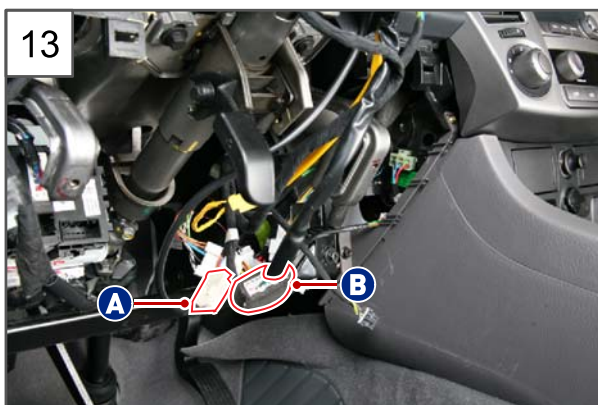
10.Remove the left lower main panel.



11.Unscrew the 2 shroud panel mounting screws.

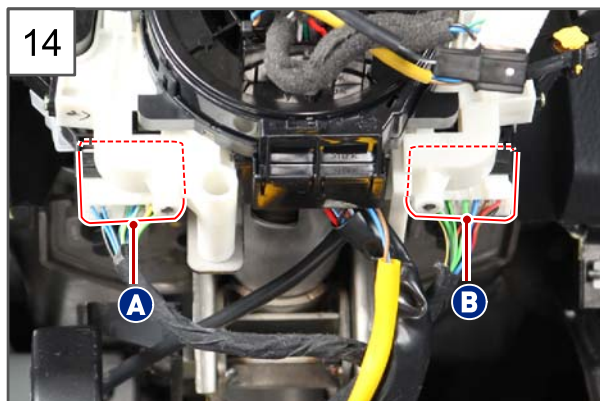


12.Remove the shroud upper panel (A) and the shroud lower panel (B).



13.Disconnect the steering wheel angle sensor connector (A) and the contact coil connector (B).

Modification basis	
Application basis	
Affected VIN	



14. Disconnect the multifunction switch connectors A and B.



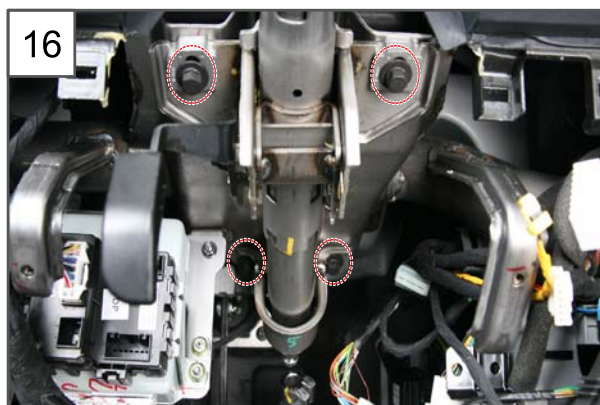
1. Unscrew a mounting bolt (12 mm) and remove the lower shaft from the steering column shaft.

**Tightening torque** 17.6 to 24.5 Nm



#### NOTE

Make a mark using the paint before disconnecting the lower shaft from the steering column shaft as illustrated.

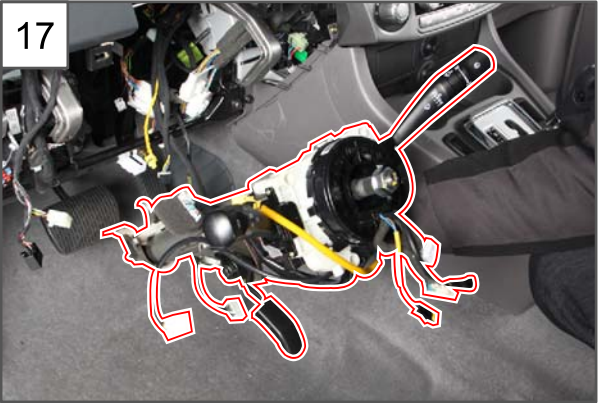


16. Unscrew the 4 mounting bolts (12 mm) on the steering column shaft.

**Tightening torque** 19.6 to 24.5 Nm

Modification basis	
Application basis	
Affected VIN	





17.Remove the steering column shaft.



18.Move the shift lever to the "D" position.



19.Unscrew the 2 mounting screws on the center fascia cup holder to remove it.



20.Disconnect the power outlet and cigarette lighter connector(A) and remove the center fascia cup holder.



Modification basis	
Application basis	
Affected VIN	



21.Remove the TGS lever side chrome molding cover using the hand remover.



22.Remove the TGS lever side chrome molding cover.

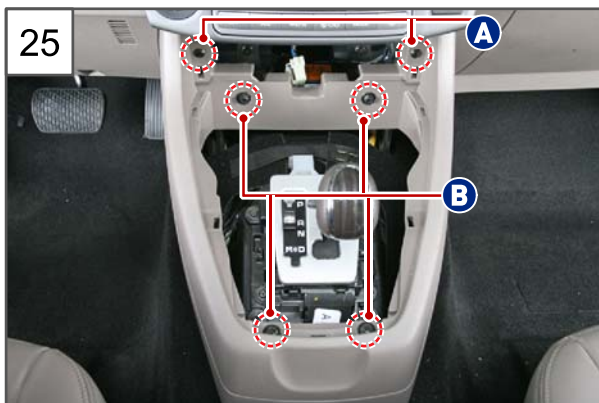


23.Prize off the lower main center fascia using the remover.



24.Remove the lower main center fascia.

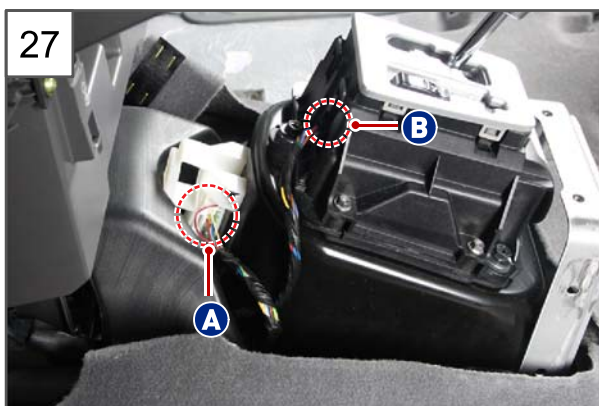




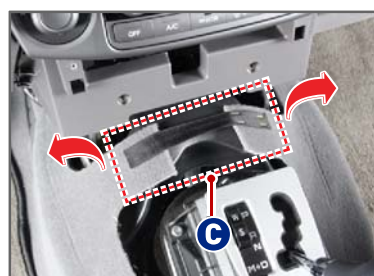
25. Unscrew the 2 lower main center panel mounting screws (A) and 4 mounting bolts (B) (10 mm).



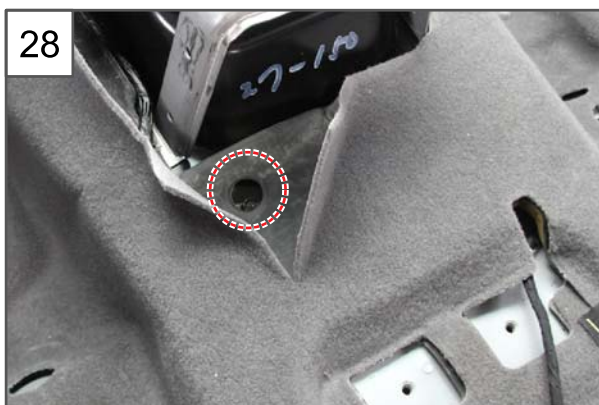
26. Remove the lower main center panel.



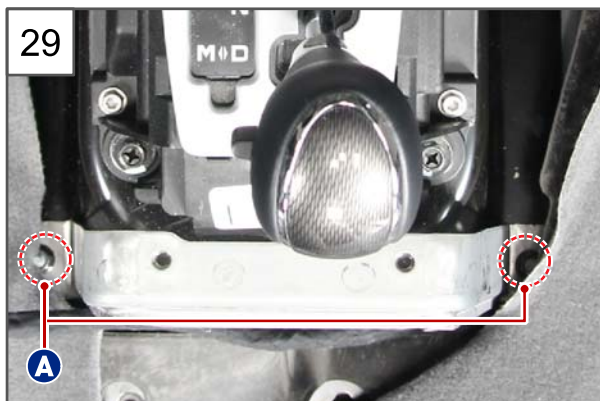
27. Disconnect the connector (A) and the TGS lever connector (B) located to the upper side of the TGS lever and open the floor mat connection (C) to left and right directions.



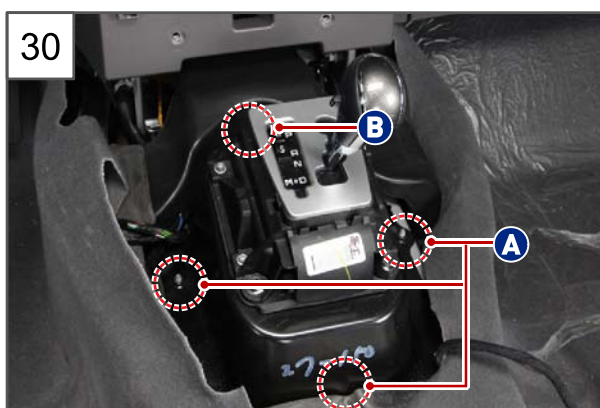
28. Unscrew the one ground bolt (10 mm).



Modification basis	
Application basis	
Affected VIN	



29. Unscrew the 2 mounting nuts (A, 10 mm) on the lower main center bracket and remove the lower main center bracket.



30. Unscrew the 3 TGS lever mounting bracket mounting nuts (A, 10 mm) and the one mounting bolt (B, 10 mm).

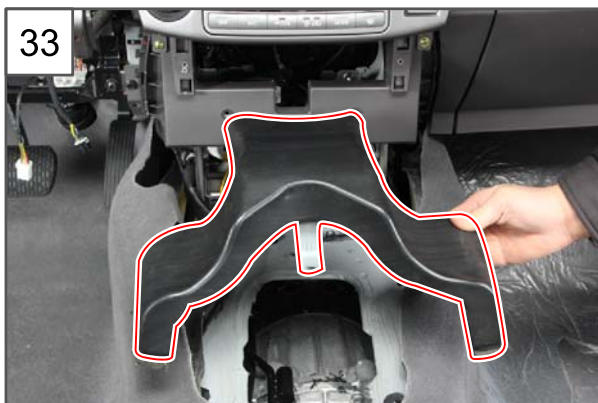


31. Lift up the TGA lever mounting bracket to remove the TGS lever rod clip (A).

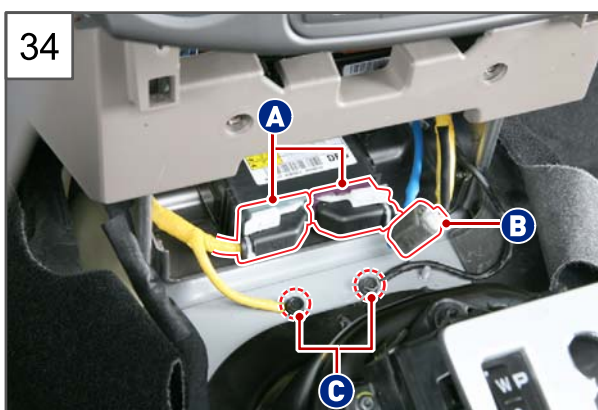


32. Remove the TGS lever and TGS lever mounting bracket.

Modification basis	
Application basis	
Affected VIN	



33.Remove the rear heating duct.



34.Disconnect the air bag unit (SDM), its connector (A) and SKM antenna connector (B), and unscrew the two ground bolt (C, 10 mm).



35.Remove the 3 LH/RH door scuff front trim caps.



36.Unscrew the 3 LH/RH door scuff front trim mounting screws to remove the LH/RH door scuff front trims.

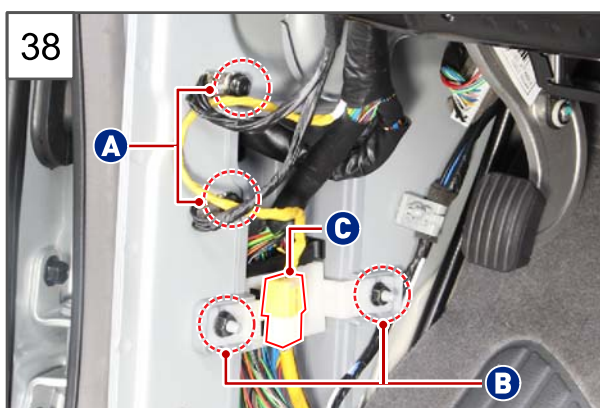


Modification basis	
Application basis	
Affected VIN	





37. Undo the flange nut cap and remove the LH/RH cowl side trims.



38. Unscrew the 2 ground bolts (A, 10 mm) and 2 wiring holder mounting nuts (B, 10 mm), and disconnect the air bag connector (C).



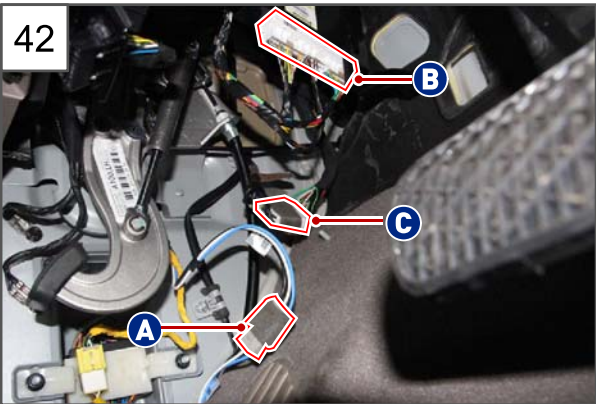
39. Disconnect the main wiring connector from the wiring holder.



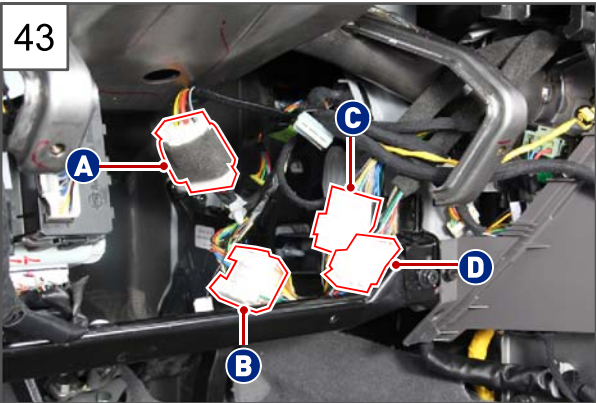
40. Disconnect the driver door wiring connector.



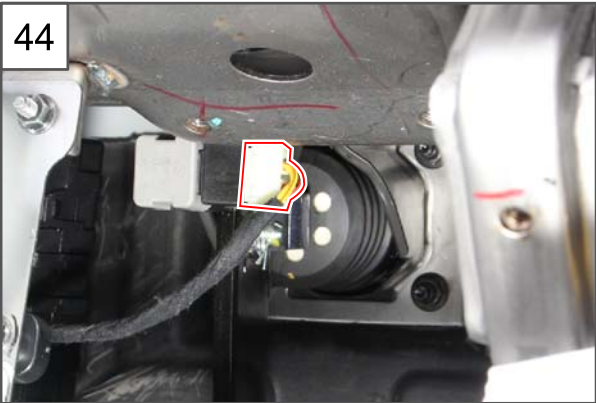
41.Disconnect the parking brake switch connector.



42.Disconnect the micro pole antenna connector (A), the SKM unit connector (B) and the roof wiring connector (C).



43.Disconnect the front heater and A/C module connectors A, B, C and D.



44.Disconnect the brake switch connector.

Modification basis	
Application basis	
Affected VIN	



45. Disconnect the accelerator pedal position sensor connector.

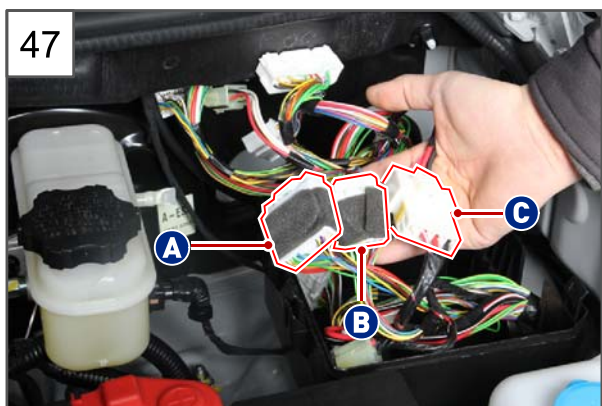


46. Remove the engine compartment fuse and relay box.



#### NOTE

Refer to "ENGINE COMPARTMENT AND RELAY BOX" section under "REMOVAL AND INSTALLATION" in "FUSE".



47. Disconnect the main wiring connectors (A, B and C) and push out the main wiring to the interior through the engine compartment panel hole.



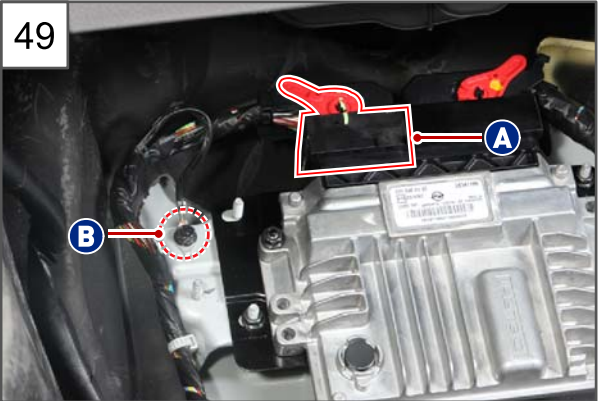
48. Rip up the some of the floor mat, unscrew the 2 passenger foot protector mounting nuts (10 mm) and remove the passenger foot protector.



Modification basis	
Application basis	
Affected VIN	

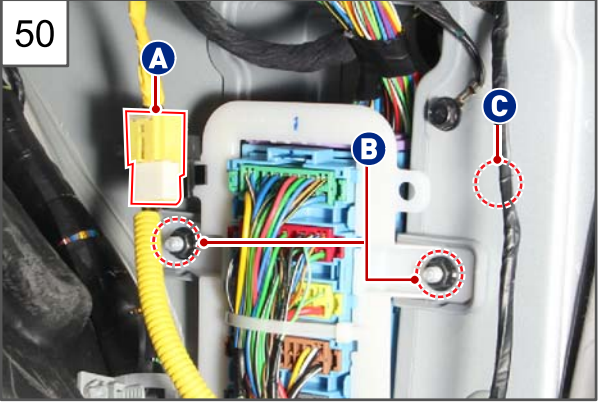


49



49. Disconnect the ECU connector (A) and unscrew the ground bolt (B).

50



50. Disconnect the air bag connector (A), and unscrew a ground bolt (B, 10 mm) and wiring holder mounting nut (C).

51



51. Pull off the main wiring connector lever to disengage and remove it.



52



52. Disconnect the front passenger door wiring connector.

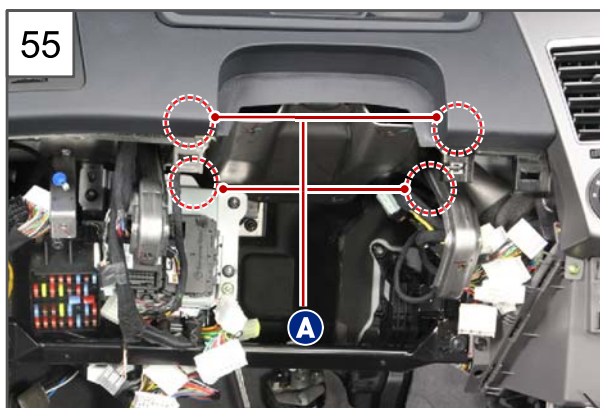
Modification basis	
Application basis	
Affected VIN	



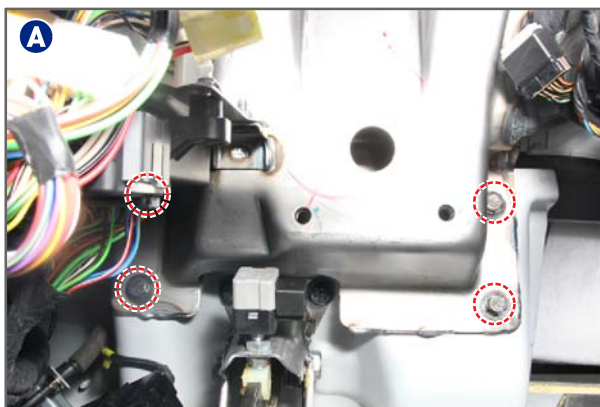
53. Undo the mounting screw rivets on the LH/RH crash pad side covers to remove the LH/RH crash pad side covers.



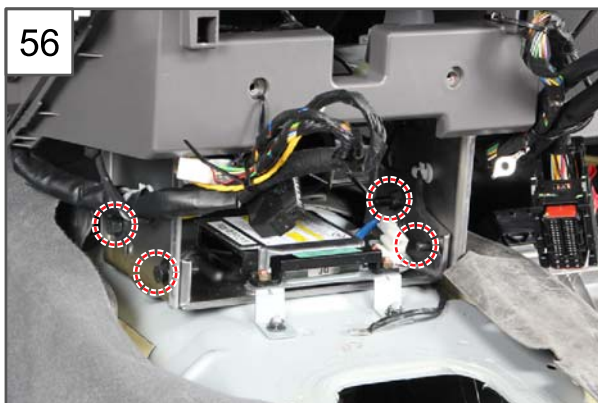
54. Remove the LH/RH A-pillar trims.



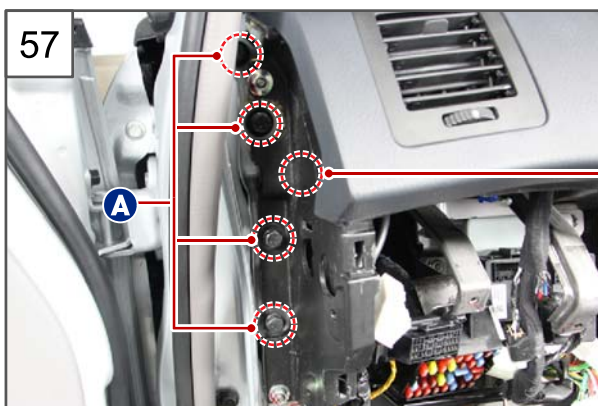
55. Unscrew the 4 cross member mounting bolts (A, 12 mm) located on the brake pedal.







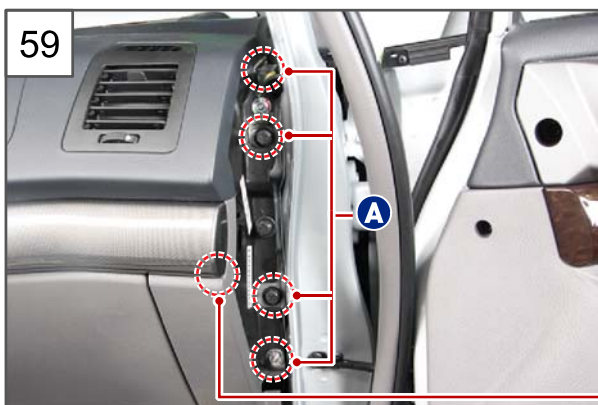
56. Unscrew the 4 lower mounting bolts (12 mm) on the cross member.



57. Unscrew the 4 LH cross member mounting bolts (A, 12 mm) and 1 bolt (B, 12 mm).



58. Unscrew the one mounting bolt (10 mm) on the RH lower main panel.



59. Unscrew the 4 RH cross member mounting bolts (A, 12 mm) and 1 bolt (B, 12 mm).



Modification basis	
Application basis	
Affected VIN	



60.Remove the instrument panel.



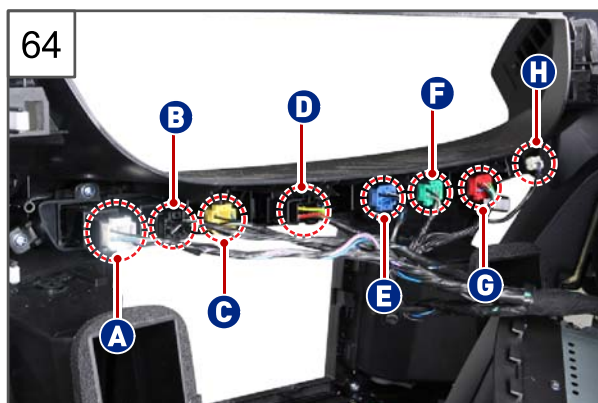
61.Remove the LH/RH front center speaker cover.



62.Unscrew the 4 mounting screws on the cluster fascia panel.

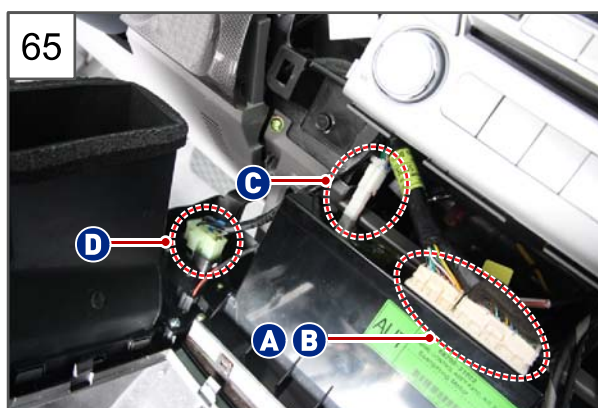


63.Remove the cluster fascia panel from the instrument panel.



64. Disconnect the switch connector from the cluster fascia.

- A. Passenger seat warmer switch
- B. ESP OFF switch
- C. Rear window heated wire switch
- D. Hazard warning flasher switch
- E. Windshield heated wire switch
- F. Fog lamp switch
- G. Driver seat warmer
- H. MODE switch



65. Disconnect the FATC connectors (A, B), tail lamp connector (C), and blower switch connector (D) and remove the cluster fascia panel.



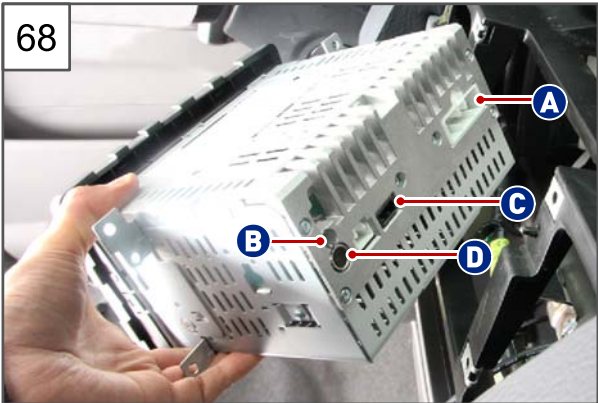
66. Unscrew the 4 audio unit mounting screws.



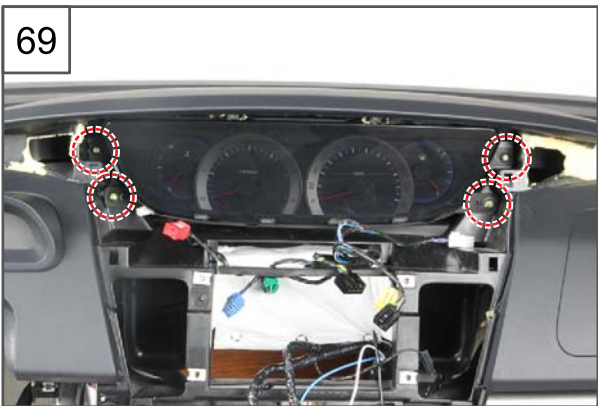
67. Remove the audio unit from the instrument panel.

Modification basis	
Application basis	
Affected VIN	





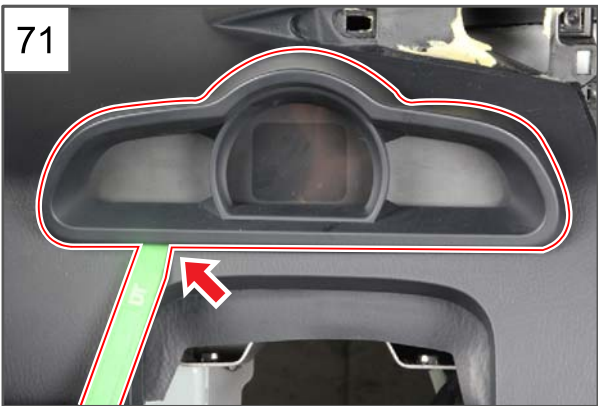
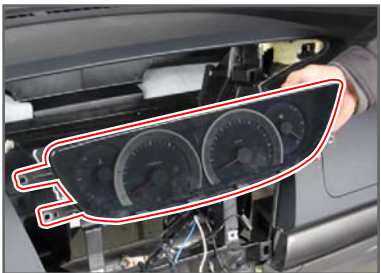
68.Disconnect the audio head unit connector A, USB connector B, AUX connector C and antenna connector D.



69.Unscrew the 4 instrument cluster mounting screws.



70.Disconnect the connector and remove the meter cluster housing.



71.Prize off the warning guide fascia panel from the below and remove it using the remover.

Modification basis	
Application basis	
Affected VIN	



72.Unscrew the 4 warning box mounting screws.



73.Disconnect the warning box connector and remove the warning box.



74.Unscrew the 4 mounting bolts (10 mm) on the glove box.



75.Remove the glove box.

Modification basis	
Application basis	
Affected VIN	

76



76. Disconnect the glove box lamp connector and the remove the glove box lamp.

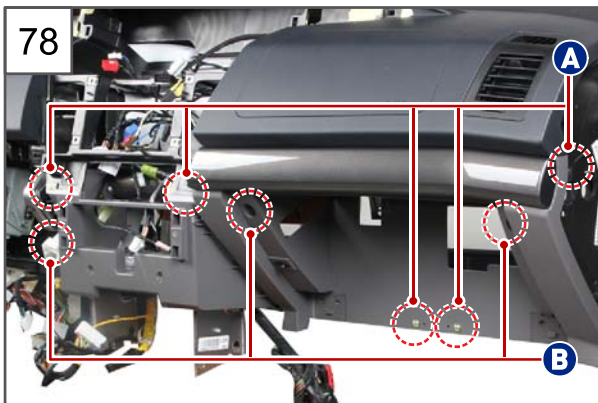


77



77. Unscrew the one mounting nut (10 mm) on the RH lower main panel in the glove box mounting hole.

78



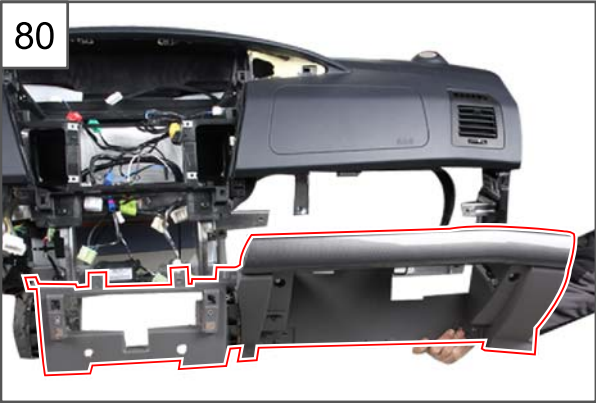
78. Unscrew the 5 RH lower main panel mounting screws (A) and 3 mounting bolts (B) (10 mm).

79



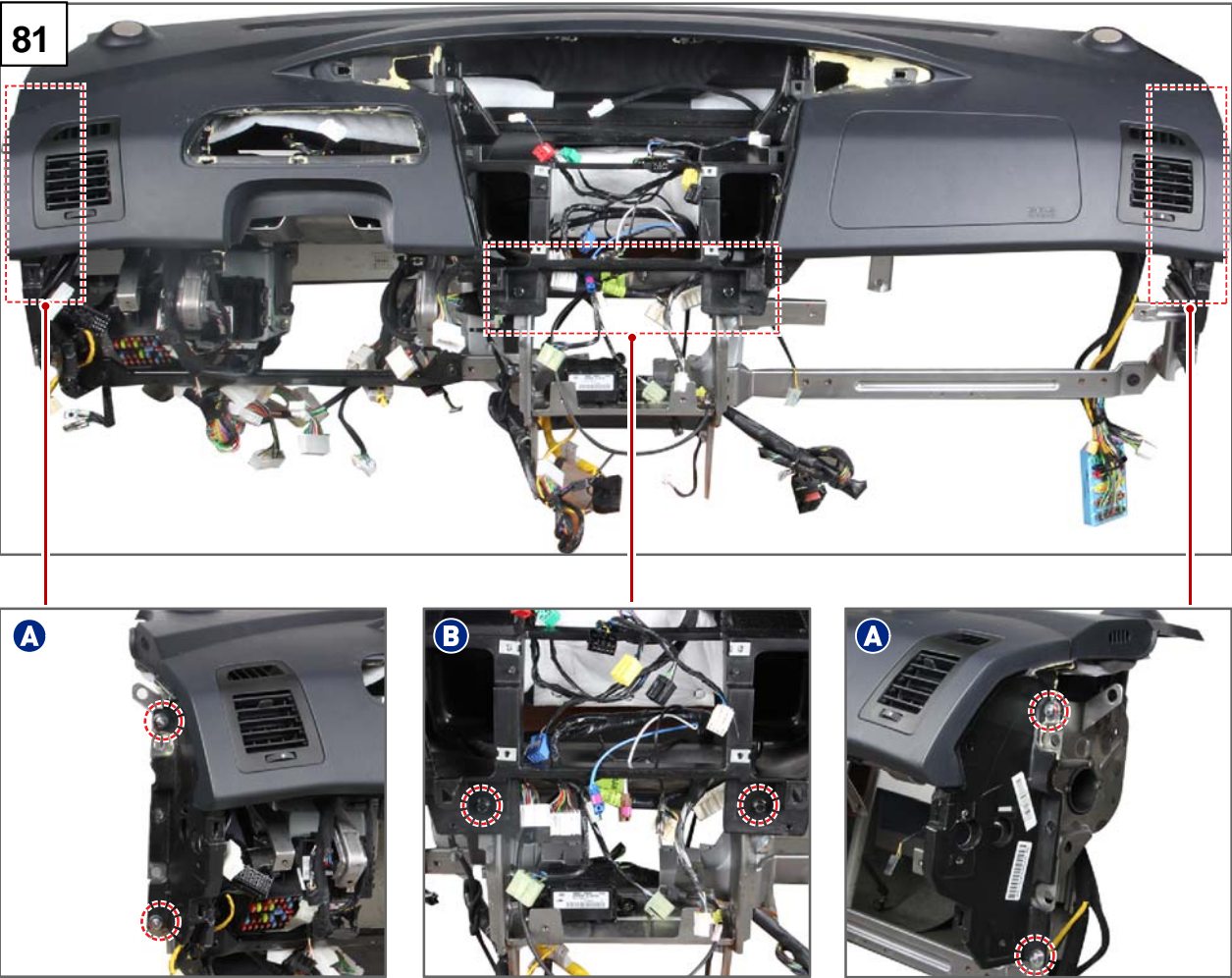
79. Remove the RH lower main panel and disconnect the glove box lamp switch connector.

Modification basis	
Application basis	
Affected VIN	



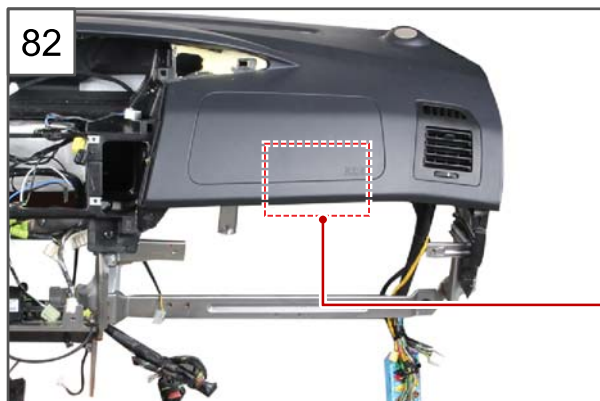
80.Remove the right lower main panel.

81.Unscrew the 4 main crash pad mounting nuts (A) (10 mm) and 2 mounting bolts (B) (10 mm).

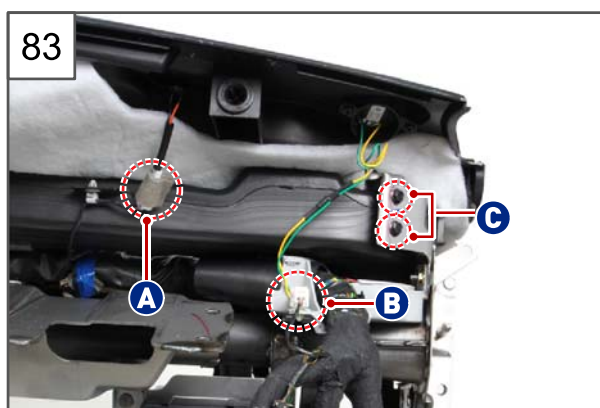
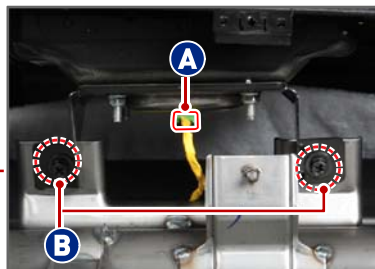


Modification basis	
Application basis	
Affected VIN	

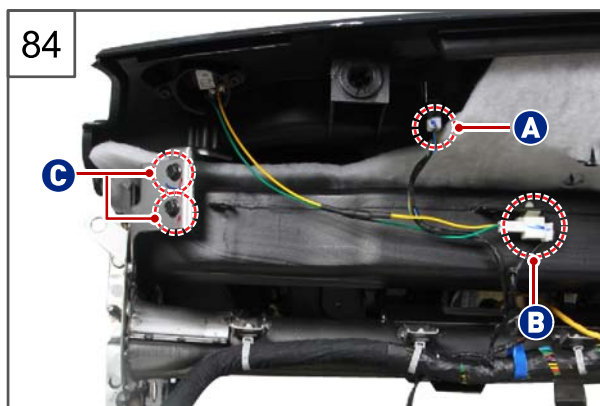




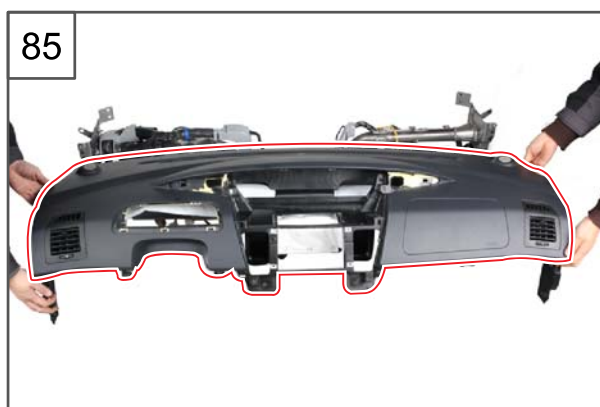
82. Disconnect the passenger air bag module connector (A) and unscrew the 2 mounting nut (B, 10 mm).



83. Disconnect the sun load sensor connector (A) and tweeter speaker connector (B) from left rear side of the instrument panel and unscrew the 2 main crash pad mounting nuts (C, 10 mm).

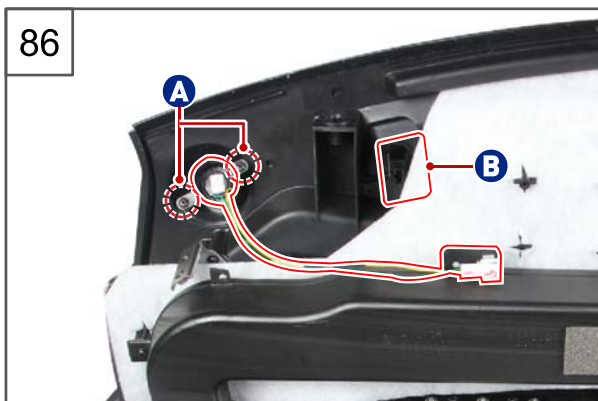


84. Disconnect the auto light unit connector (A) and tweeter speaker connector (B) from right rear side of the instrument panel and unscrew the 2 main crash pad mounting nuts (C, 10 mm).

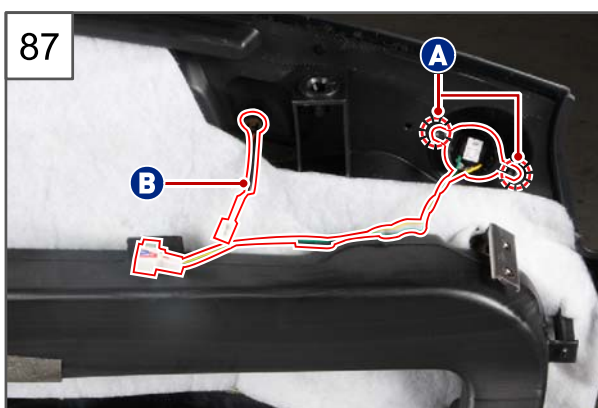


85. Remove the main crash pad.

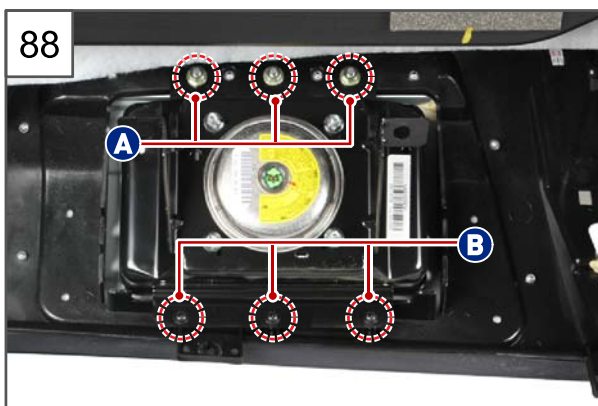




86. Unscrew the 2 RH tweeter speaker mounting screws (A) and remove the tweeter speaker and auto light unit (B).



87. Unscrew the 2 LH tweeter speaker mounting screws (A) and remove the tweeter speaker and sun load sensor (B).



88. Unscrew the 3 passenger air bag module mounting nuts (A) (10 mm) and 3 mounting screws (B) at the rear side of the main crash pad.



89. Remove the passenger air bag module from the main crash pad.

Modification basis	
Application basis	
Affected VIN	



90.Installation is in the reverse order of removal.

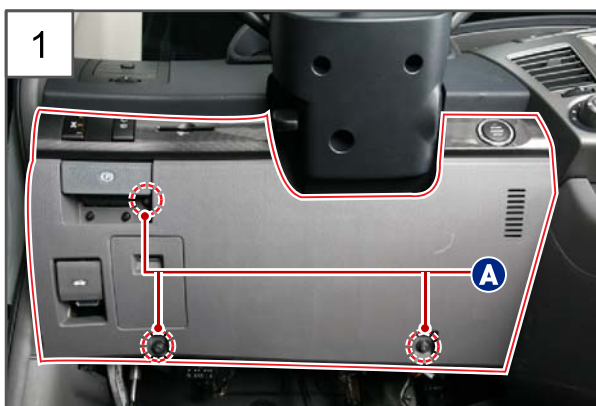
Modification basis	
Application basis	
Affected VIN	

S.G.N.

## 7610-20 LOWER MAIN PANEL ASSEMBLY

Preceding work

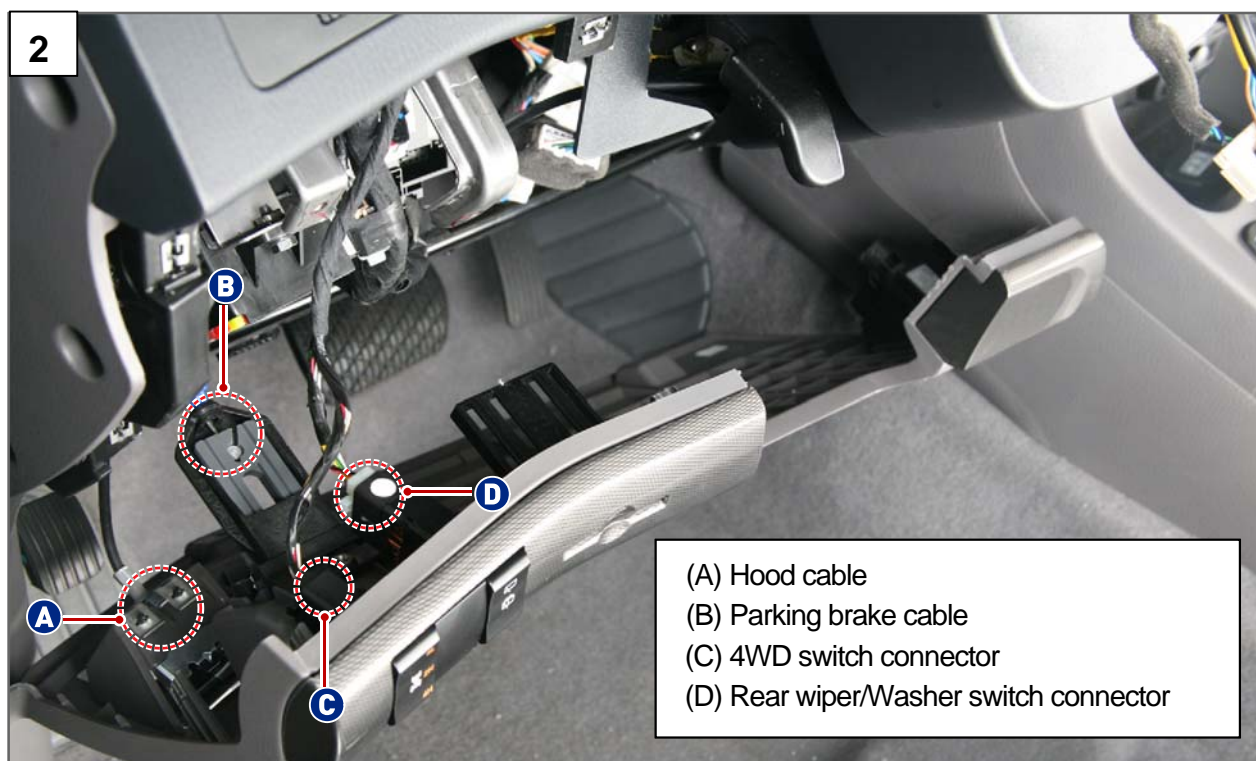
- Disconnect the negative battery cable.



1. Unscrew the 3 fastening bolts (A, 10 mm) to remove the LH lower main panel.

Modification basis	
Application basis	
Affected VIN	

2. Disconnect the connectors (A, B, C, D) connected to the left lower main panel.



3. Remove the left lower main panel.



4. Remove the rear console.



**NOTE**

Refer to "REAR CONSOLE" under "REMOVAL AND INSTALLATION" in "BODY INTERIOR" chapter

Modification basis	
Application basis	
Affected VIN	





5. Move the shift lever to the "D" position.



6. Unscrew the 2 mounting screws on the center fascia cup holder to remove it.



7. Disconnect the power outlet and cigarette lighter connector(A) and remove the center fascia cup holder.



8. Remove the TGS lever side chrome molding cover using the hand remover.

Modification basis	
Application basis	
Affected VIN	



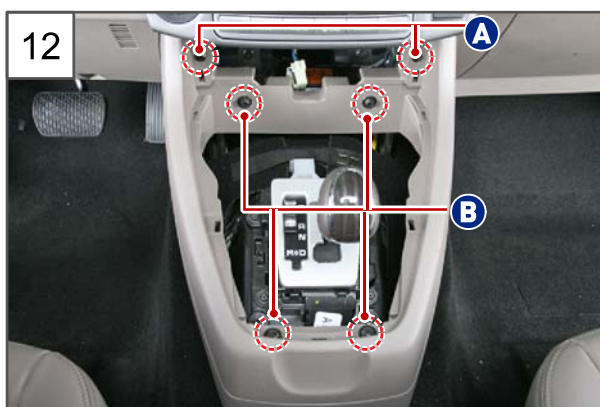
9. Remove the TGS lever side chrome molding cover.



10. Prize off the lower main center fascia using the remover.



11. Remove the lower main sensor fascia.



12. Unscrew the 2 lower main center panel mounting screws (A) and 4 mounting bolts (B) (10 mm).






13.Remove the lower main center panel.



14.Remove the LH/RH front center speaker cover.



15.Remove the cluster fascia panel.

 **NOTE**

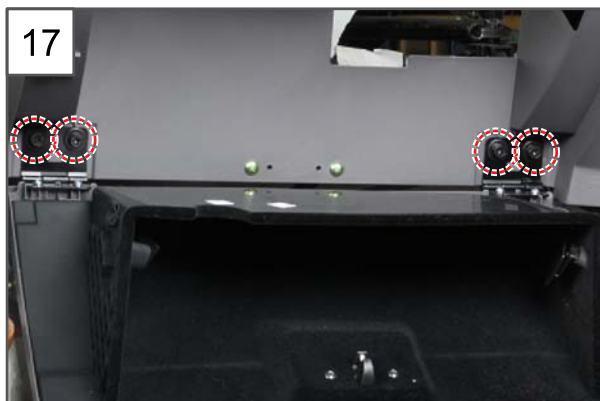
Refer to "CLUSTER FASCIA PANEL" under "REMOVAL AND INSTALLATION" in "BODY INTERIOR" chapter.



16.Undo the 3 mounting screw rivets on the RH crash cowl side cover and remove the crash cowl side cover.



Modification basis	
Application basis	
Affected VIN	



17. Unscrew the 4 mounting bolts (10 mm) on the glove box.



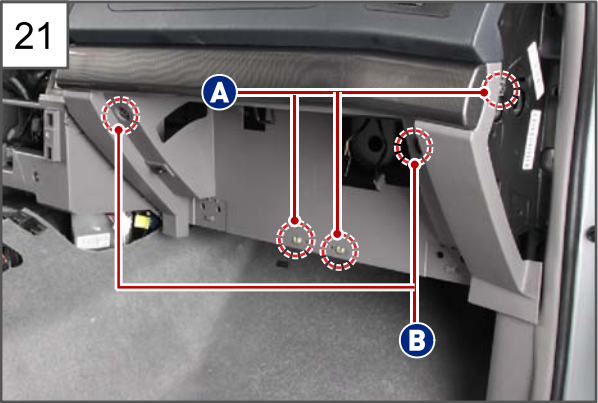
18. Remove the glove box.



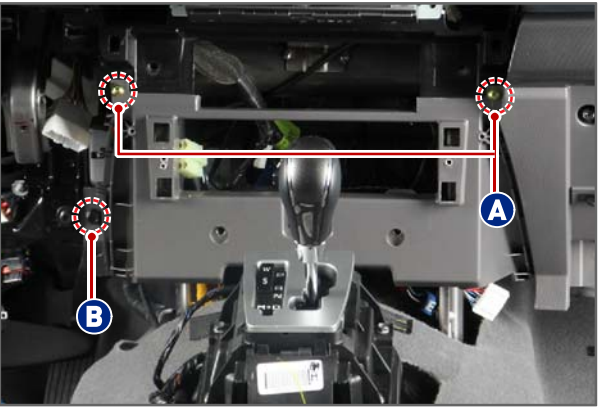
19. Disconnect the glove box lamp connector and the remove the glove box lamp.



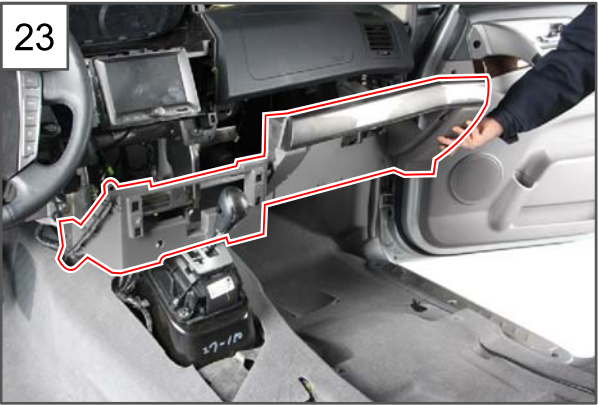
20. Unscrew the one mounting nut (10 mm) on the RH lower main panel in the glove box mounting hole.



21.Unscrew the 5 RH lower main panel mounting screws (A) and 3 mounting bolts (B) (10 mm).



22.Remove the RH lower main panel and disconnect the glove box lamp switch connector.



23.Remove the right lower main panel.

Modification basis	
Application basis	
Affected VIN	

24

LH lower main panel



24.Installation is in the reverse order of removal.

RH lower main panel



Modification basis	
Application basis	
Affected VIN	



S.G.N.

## 7610-32 CLUSTER FASCIA PANEL

Preceding work

- Disconnect the negative battery cable.



1. Remove the rear console.



### NOTE

Refer to "REAR CONSOLE" under "REMOVAL AND INSTALLATION" in "BODY INTERIOR" chapter.



2. Move the shift lever to the "D" position.

Modification basis	
Application basis	
Affected VIN	



3. Unscrew the 2 mounting screws on the center fascia cup holder to remove it.



4. Disconnect the power outlet and cigarette lighter connector(A) and remove the center fascia cup holder.



5. Remove the TGS lever side chrome molding cover using the hand remover.



6. Remove the TGS lever side chrome molding cover.

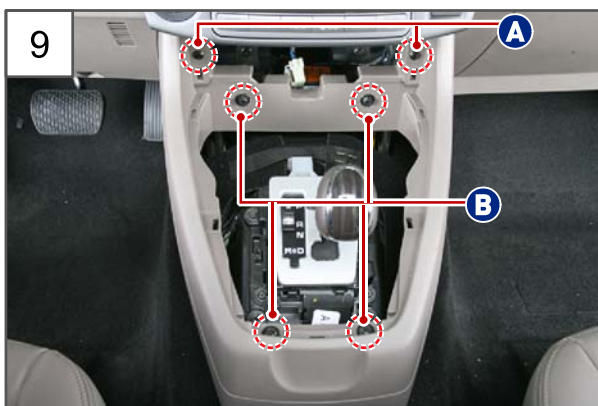




7. Prize off the lower main center fascia using the hand remover.



8. Remove the lower main sensor fascia.



9. Unscrew the 2 lower main center panel mounting screws (A) and 4 mounting bolts (B) (10 mm).

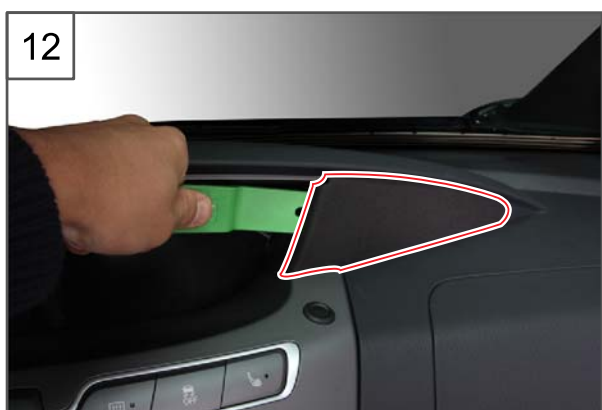


10. Remove the lower main center panel.

Modification basis	
Application basis	
Affected VIN	



11. Unscrew the 2 lower mounting screws on the cluster fascia panel.



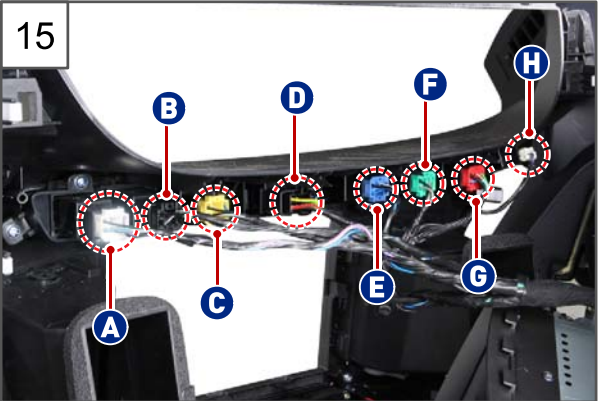
12. Remove the LH/RH front center speaker cover.



13. Unscrew the 2 upper mounting screws on the cluster fascia panel.

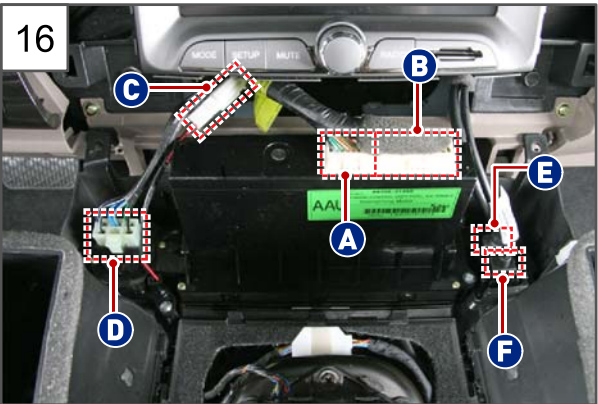


14. Remove the cluster fascia panel from the instrument panel.



15.Disconnect the switch connector from the cluster fascia.

- A. Passenger seat warmer switch
- B. ESP OFF switch
- C. Rear window heated wire switch
- D. Hazard warning flasher switch
- E. Windshield heated wire switch
- F. Fog lamp switch
- G. Driver seat warmer
- H. MODE switch



16.Disconnect the FATC connectors (A and B), tail lamp connector (C) and blower switch connector (D), HDMI cable port(E), USB cable port(F) and remove the cluster fascia panel.



19.Installation is in the reverse order of removal.

Modification basis	
Application basis	
Affected VIN	

**S.G.N.**  
**7630-01 CIGARETTE & POWER JACK FASCIA ASSEMBLY**

**Preceding work** - Disconnect the negative battery cable.



1. Move the shift lever to the "D" position.



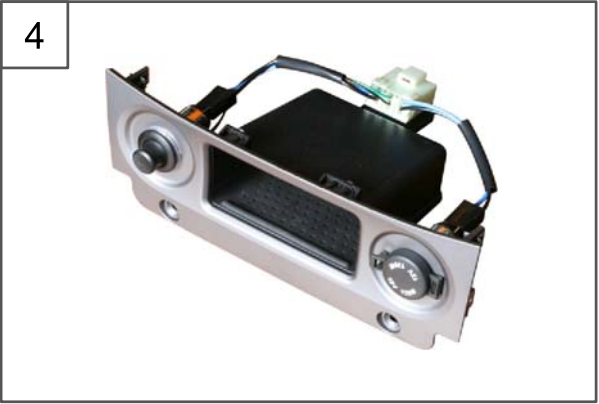
2. Unscrew the 2 mounting screws and remove the cigarette lighter & power jack fascia.

Modification basis	
Application basis	
Affected VIN	





3. Disconnect the connector (A) and remove the cigarette lighter & power jack fascia.



4. Install in the reverse order of removal.

Modification basis	
Application basis	
Affected VIN	



S.G.N.

**7631-10 REAR CONSOLE ASSEMBLY****Preceding work**

- Disconnect the negative battery cable.

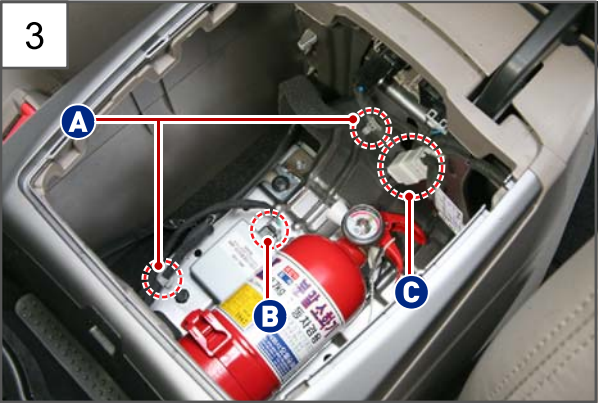


1. Prise off the console tray, disconnect the emergency slot connector (A) and remove the console tray.



2. Remove the rear console main mat.

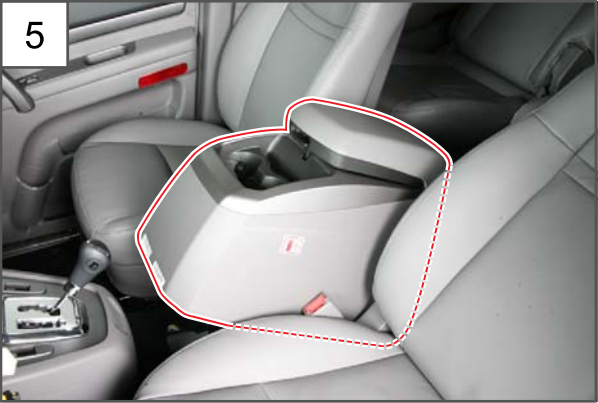
Modification basis	
Application basis	
Affected VIN	



3. Disconnect and remove the clamp
- (A) Wiring clamp
  - (B) SSPS unit connector
  - (C) power outlet connector



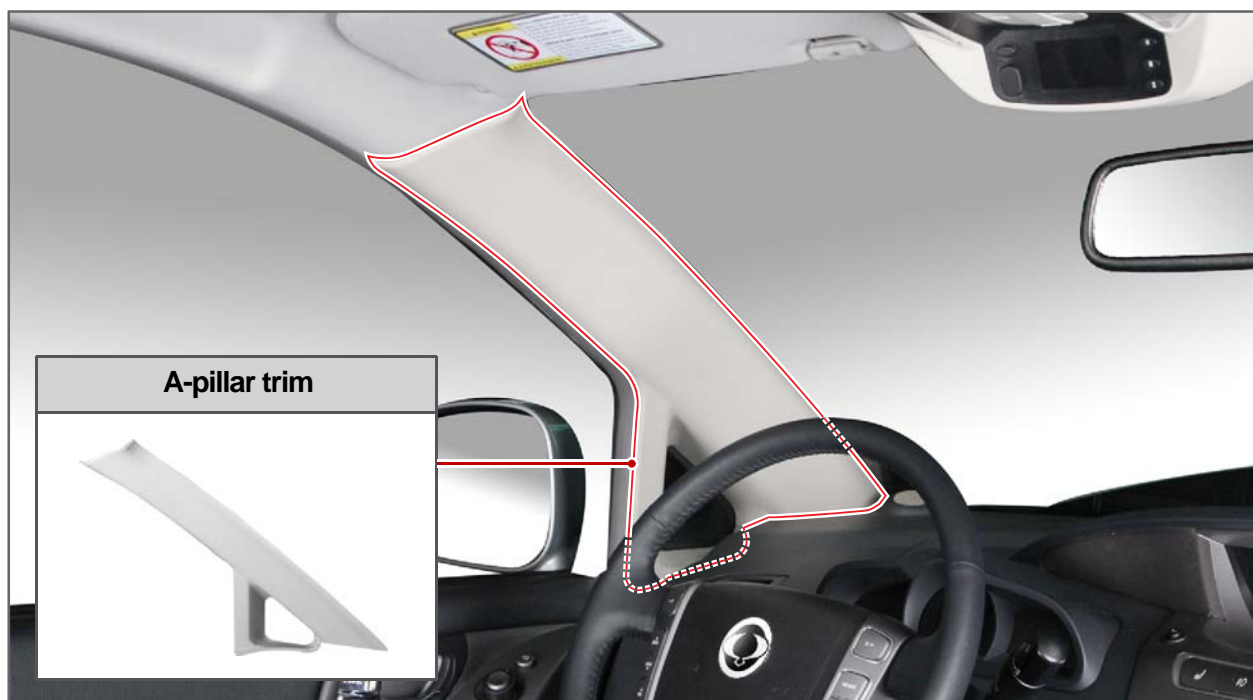
4. Unscrew the 4 mounting bolts (10 mm) on the rear console assembly.



5. Remove the rear console assembly.
6. Installation is in the reverse order of removal.

Modification basis	
Application basis	
Affected VIN	

S.G.N.

**7730-01 A-PILLAR TRIM**

1. Remove the front door body side weather strip.



2. Prize off the A-pillar trim from its upper side.

Modification basis	
Application basis	
Affected VIN	



3. Remove the A-pillar trim.

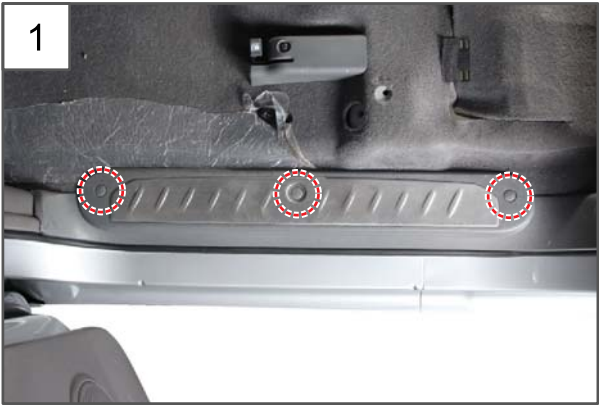
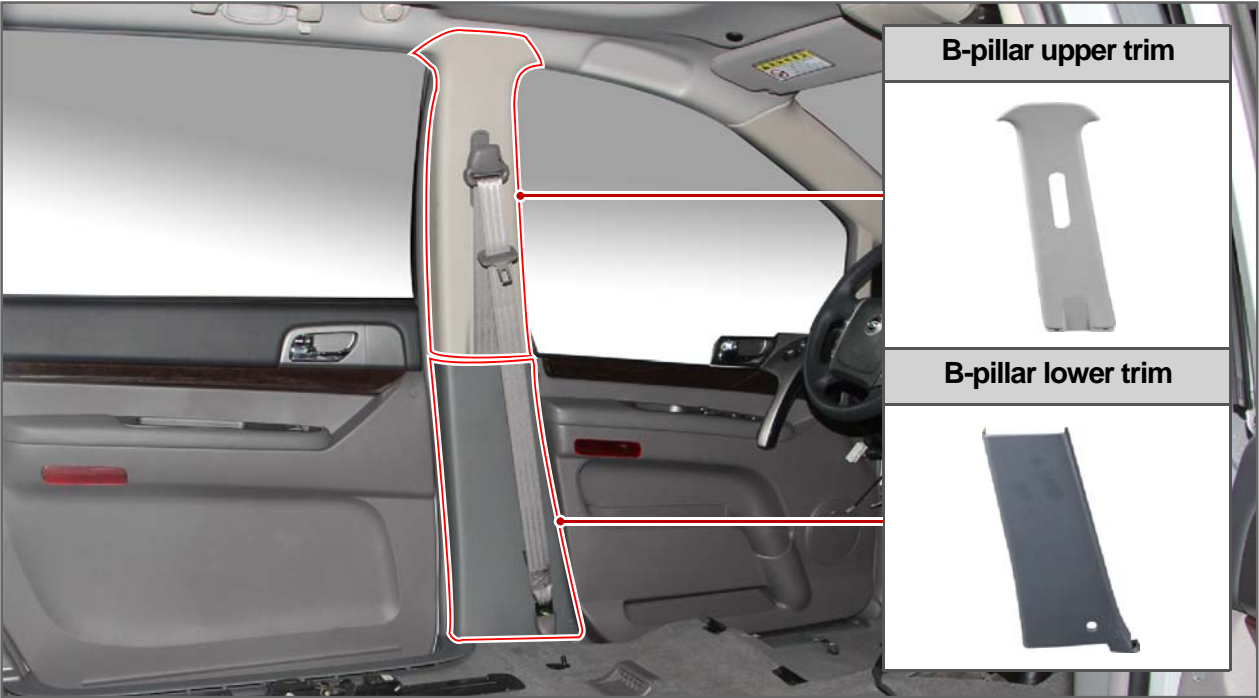


4. Installation is in the reverse order of removal.

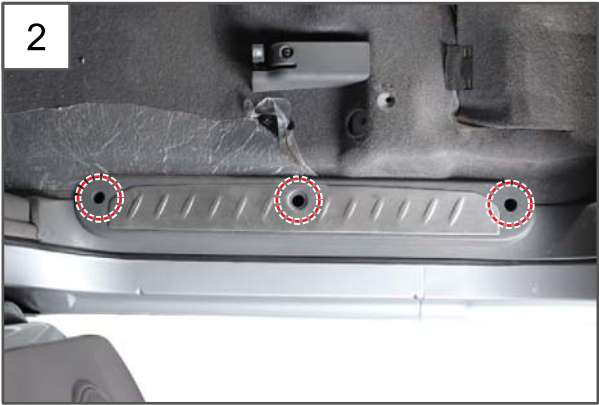
Modification basis	
Application basis	
Affected VIN	



S.G.N. 7730-04 B-PILLAR UPPER TRIM



1. Remove the 3 door scuff front trim caps.



2. Unscrew the 3 mounting screws on the door scuff front trim to remove it.

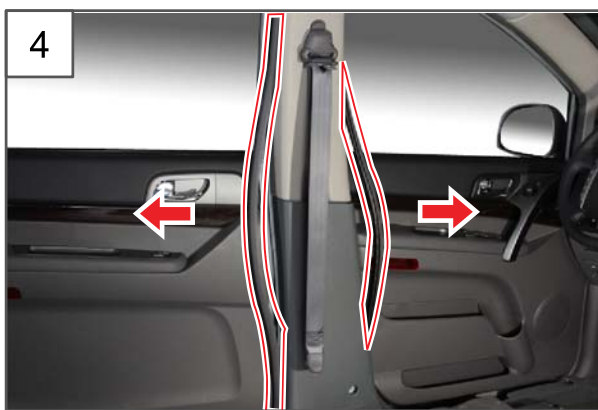


Modification basis	
Application basis	
Affected VIN	





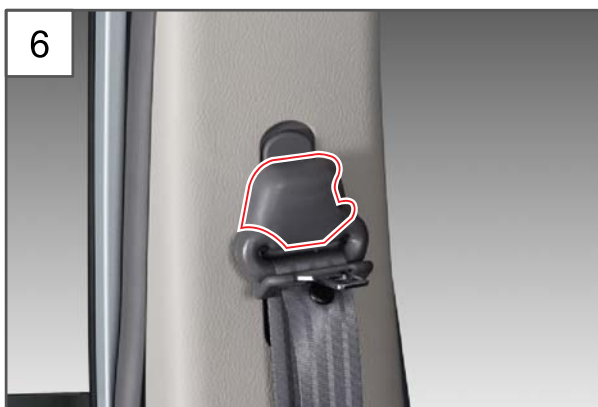
3. Unscrew the lower mounting bolt (17 mm) on the front seat belt.



4. Prize off the front and rear door body side weather strips.



5. Remove the B-pillar lower trim.



6. Remove the front D-ring cover.



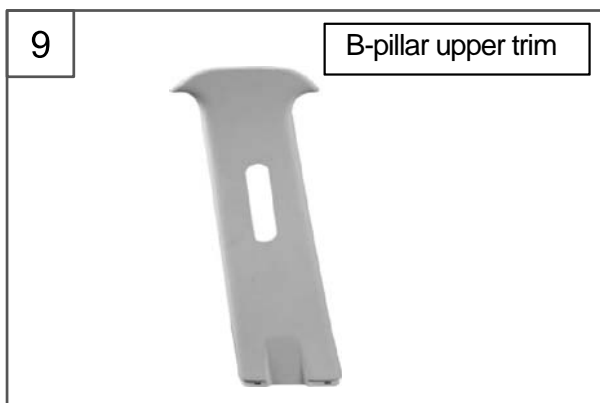
Modification basis	
Application basis	
Affected VIN	



7. Unscrew the upper mounting bolt (17 mm) on the front seat belt.



8. Remove the B-pillar upper trim.



9. Installation is in the reverse order of removal.



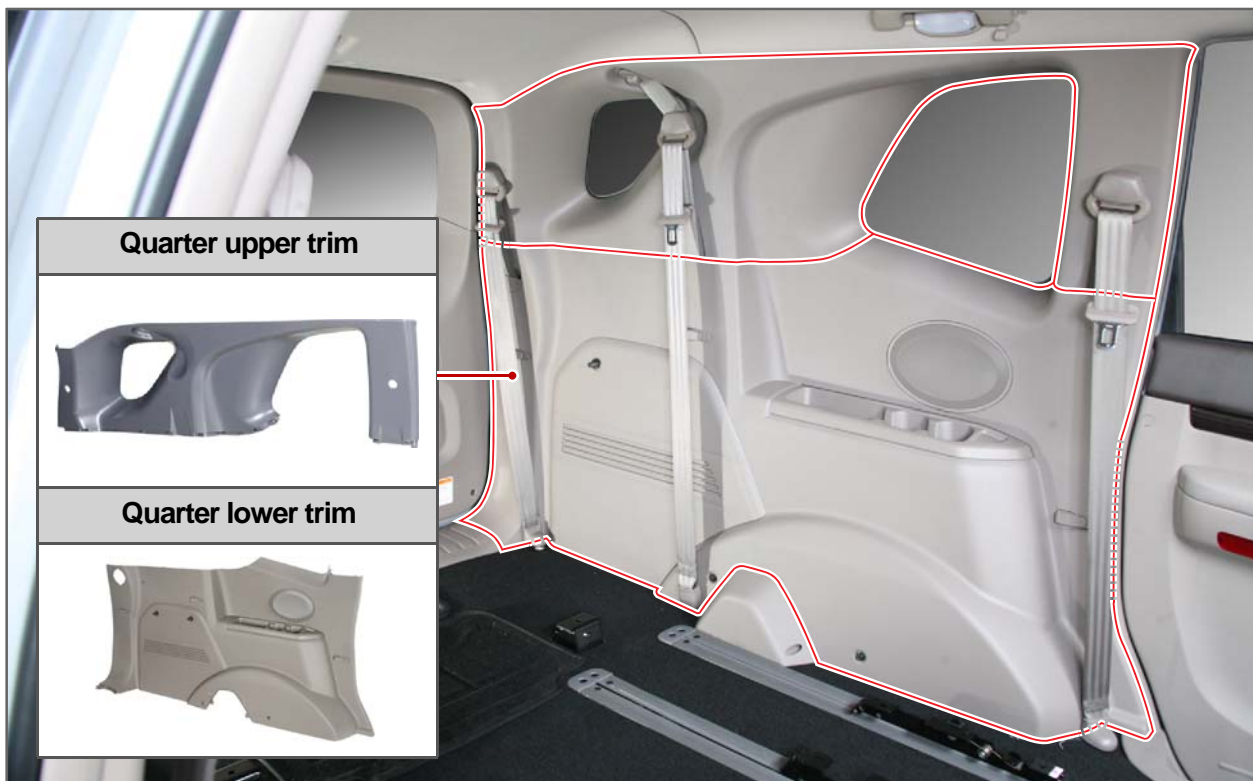
S.G.N.

7730-06

## QUARTER UPPER TRIM

Preceding work

- Disconnect the negative battery cable.



1. Remove the rear 2nd row seat.



### NOTE

Refer to "REAR 1ST ROW SEAT" section under "REMOVAL AND INSTALLATION" in "SEAT" chapter.



2. Remove the rear 3rd row seat.



### NOTE

Refer to "REAR 3RD ROW SEAT" section under "REMOVAL AND INSTALLATION" in "SEAT" chapter.

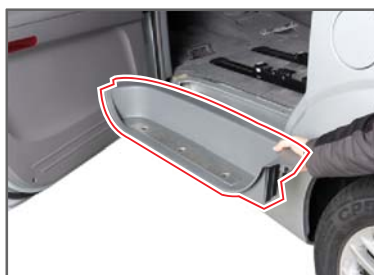
Modification basis	
Application basis	
Affected VIN	



3. Remove the 3 door scuff rear trim caps.



4. Unscrew the 3 mounting screws on the door scuff rear trim to remove it.



5. Remove the rear transverse trim.



6. Unscrew the 3 lower mounting bolts (17 mm) on rear 1st, 2nd and 3rd row seat belt.



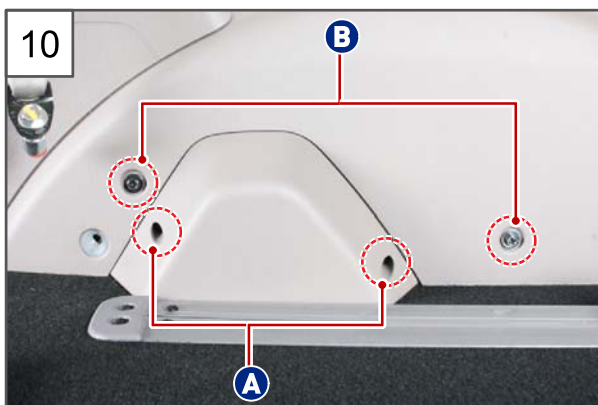
7. Remove the rear 3rd seat belt D-ring cover using the remover.



8. Unscrew the upper mounting bolt (17 mm) on the upper side of the rear 3rd seat belt.



9. Remove the rear 3rd seat belt cover using the remover.



10. Unscrew the 2 mounting screws on the shock absorber service cover and the 2 mounting bolts (10 mm) on the quarter lower trim.

Modification basis	
Application basis	
Affected VIN	

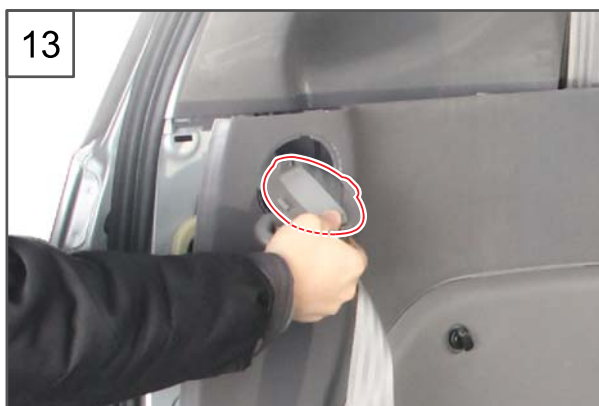




11.Remove the shock absorber service cover.



12.Unscrew the mounting screw on the quarter lower trim.



13.Prize off the quarter lower trim and remove the rear 3rd row seat belt cover through the hole.



14.Remove the quarter lower trim.



Disconnect the power outlet connector



16.Remove the bolt cap on the rear 2nd row seat belt.



17.Unscrew the one mounting bolt (17 mm) on the rear 2nd row seat belt to remove it.



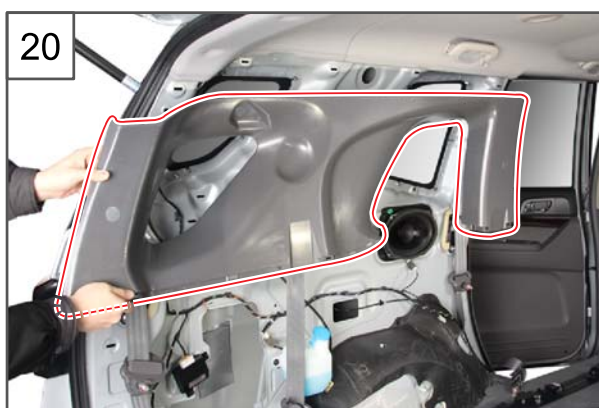
18.Remove the rear 1st row seat belt D-ring cover using the remover.



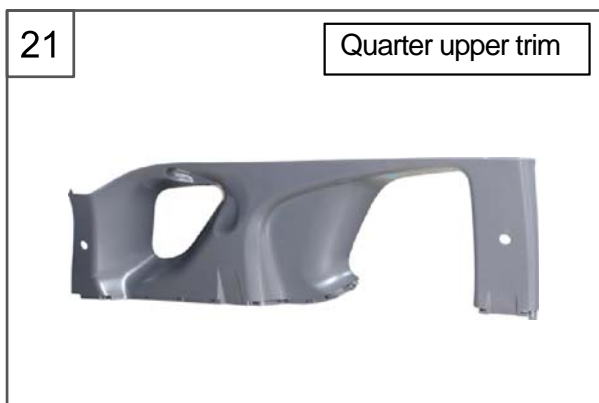
Modification basis	
Application basis	
Affected VIN	



19. Unscrew the one mounting bolt (17 mm) on the rear 1st row seat belt to remove it.



20. Remove the quarter upper trim.



Quarter upper trim

21. Installation is in the reverse order of removal.



Quarter lower trim

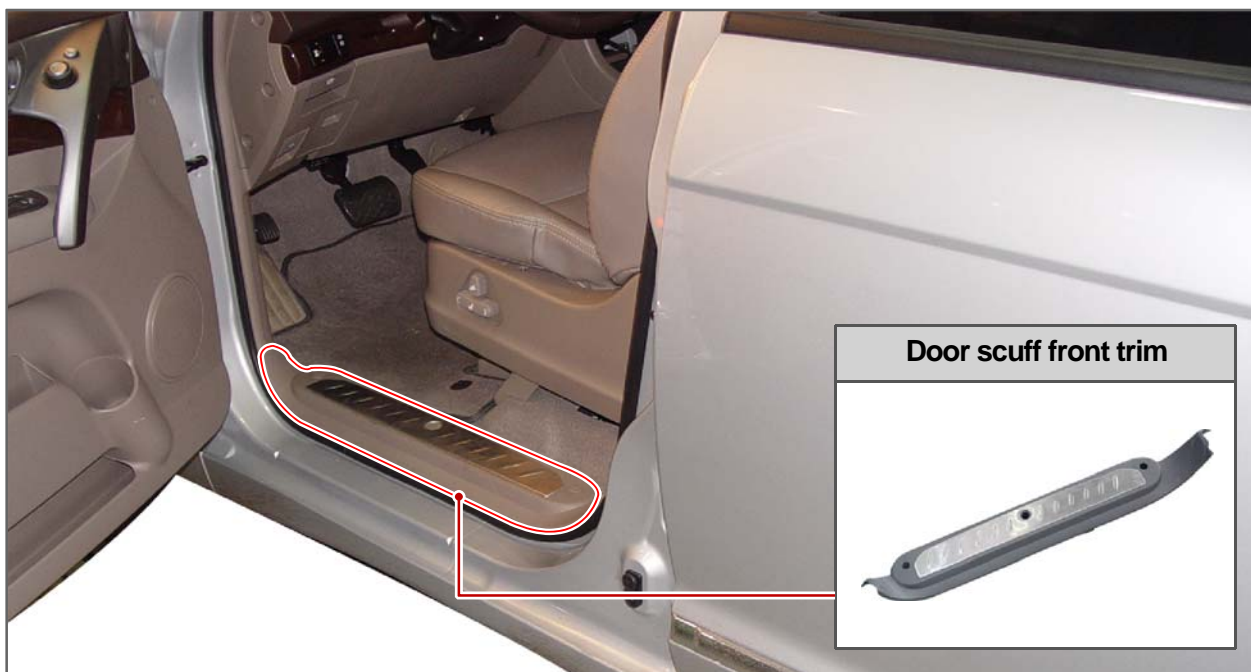
S.G.N.

## 7730-30 DOOR SCUFF FRONT TRIM



### NOTE

The door scuff front trim is removed and installed with the same ways as the door scuff rear trim. The following description is based on the door scuff front trim.



1. Remove the 3 door scuff front trim caps.



2. Unscrew the 3 mounting screws on the door scuff front trim.

Modification basis	
Application basis	
Affected VIN	



3. Remove the door scuff front cover.



4. Installation is in the reverse order of removal.

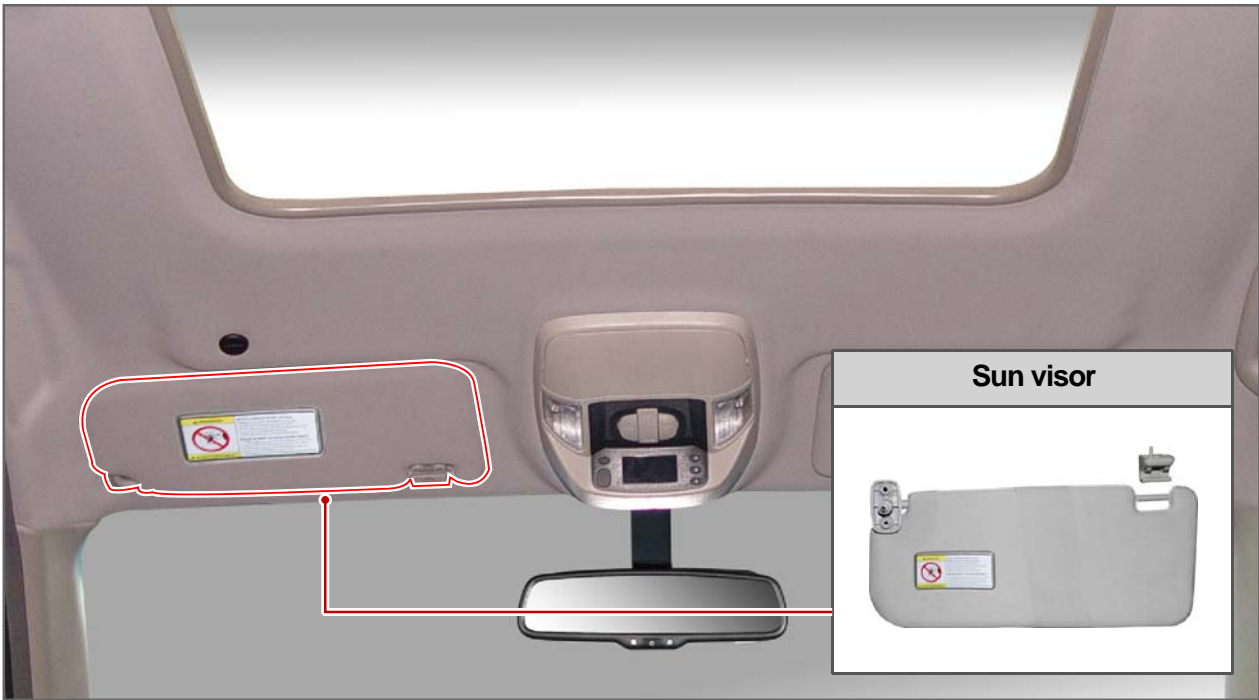


Modification basis	
Application basis	
Affected VIN	

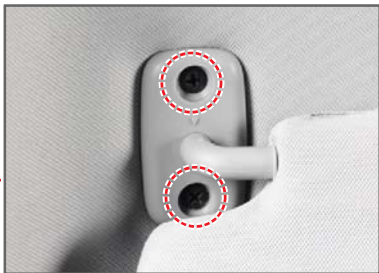


S.G.N.

7700-01SUN VISOR



1. Unscrew the 2 sun visor mounting screws.

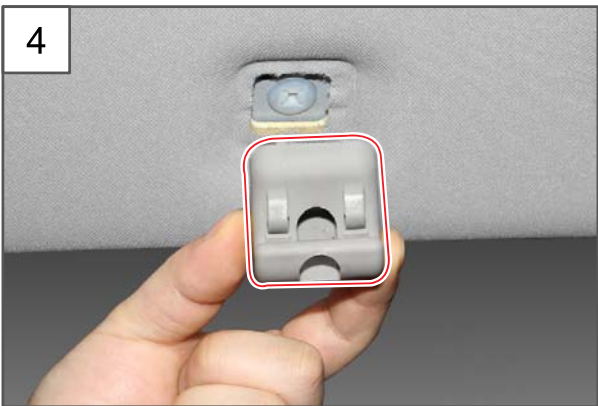


2. Remove the sun visor.

Modification basis	
Application basis	
Affected VIN	



3. Unscrew the one sun visor retainer mounting screw.



4. Remove the sun visor retainer.



5. Installation is in the reverse order of removal.

Modification basis	
Application basis	
Affected VIN	